



TAXIMETER TESTER

BY GPS

The Taximeter tester by (2022) is a system focused on the verification of fares of all types of cabs, including vehicles equipped with the most updated systems on the market.

The Ryme Tester system measures speed, distance traveled and operating time.

Measuring equipment based on the Global Positioning System via Satellite (GPS). The measurement is performed by evaluating the behavior of the vehicle on the road.

The meter tester automatically locates the satellites, evaluates the time and position information received and derives from this the space traveled as well as the vehicle speed.

PATENTED

LCD display with RGB color

Measurement

Speed
Distance
Tiempo

Compatible with

EBS, TCS, ABS...

Standard Equipment

- ✓ Taximeter tester.
- ✓ Satellite GPS receiver.
- ✓ Charger/PC connector via USB type C.
- ✓ External memory card.

Main features

- ✓ Valid for all types of vehicles.
- ✓ Measurement function from 40 km/h to 120km/h.
- ✓ GPS sensitivity -167dBm (leader in the sector).
- ✓ Simple and intuitive menu.
- ✓ No installation required prior to use.
- ✓ No maintenance required.
- ✓ Instant measurement.
- ✓ Test using real vehicle conditions.
- ✓ Maximum and minimum amount admitted.
- ✓ Expandable storage.
- ✓ Possibility of downloading data to PC via USB type C.
- ✓ Parameterization by ENAC test: cancellation of the test in case of non-compliance with minimum and maximum speeds and under signal qualities within range.
- ✓ Tolerance of +-2%.
- ✓ Compatible with all-wheel drive vehicles, front, rear, total, with ESP, TCS, ABS, etc.



Technical Data

Rechargeable battery (external battery possible)

Power supply to current or PC

Dimensions 105 x 50 x 32 mm

Equipment weight: 186g

2.05 inch full color display (RGB)

*Receptor vía GPS

Receiver via GPS of reduced size and great coverage. Magnetic support for a correct fixation of the receiver to the body of the vehicle.

Dilution of accuracy (DOP): PDOP

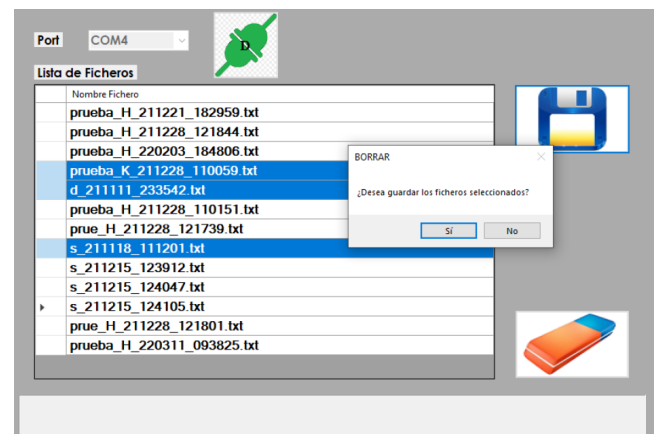
Compatibility with NEO-7 y NEO-6

Dimensions: 34 x 25 x 10 mm

Weight: 25 g

Environmental conditions: -40 a 80°C

Software PC



Both the equipment software and the PC launcher can be translated into different languages.