

Calibrator and programmer for all analogue and digital tachographs, mainly used in vehicle inspection stations for checking the speed limiter in tachographs.



Main Functions

- W Factor Measurement (Manual and Photocell)
- Factor Measurement K
- Parameter Configuration
- Bench test (manual and automatic)
- Odometer test
- Reading DTCs (installers only)
- Deleting DTCs (installers only)
- Sensor matching (KITAS)
- Clock Test



Technical features

- Integrated Bluetooth
- Backlit LCD display
- Dimensions: 150 x 100 x 45 mm
- Power Supply Voltage: 9 to 30 VDC
- Power Supply Current: 12 mA
- Made of ABS (IP40)
- operating temperature: -0...+70°C
- Weight: 155 g



Debido a la continua evolución de nuestros productos, las características técnicas y de diseño podrían estar sujetas a modificaciones, sin previo aviso.

Supported Tachographs



Stoneridge
VR2400



VDO
TSU1391



Actia
Smartach



VDO
1318

VDO
1314



VDO
MTC01324/1390



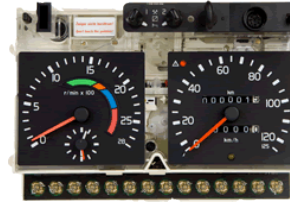
EFKON
EFAS-4



VDO
DTCO1381



Stoneridge
SE5000 Exakt Duo



Motometer
EGK100



VDO
FTCO1319

Advantage

Double accuracy

Improved data collection through pulse detection

Compact size

One of the smallest programmers on the market.

Powered by the tachograph

No power supply cable or battery required

Very easy to use

Intuitive four-line display, no training required

Automatic tachograph detection

The tachograph model is detected in the Connections

Internal flash memory

Easy update on PC through a serial port

Standard Equipment



Lighter Charger



Cable 1319 for MOT



Cable clamp Connections
ground



Cable 1318



Flat DC Test Cable for 1314



Flat DC Test Cable for 1318

Optional Equipment

3 Connections Cables:

Interface

· Power Supply

· Connections to PC for software updates and use

Equipment calibration

Bluetooth receiver for PC data download

Bluetooth adaptation for V1 devices (before 10/2017)

GEN-SOFT

Reception, storage and data software

GEN-INTE

Standard integration software

GEN-INTO

Integration software other non-integrated management software