

The Smokemeter is a modern equipment, prepared and ready to meet the requirements of UNE 82503 and DIN 57411, SAE J1677 USA / Canada.

It is a partial flow meter based on the principle of light absorption by smoke. It allows to perform an official opacity test guided step by step through the program.

It has a configuration module that allows to consult and modify the operation parameters. Its access is done through a password as a security measure for the authorized technical personnel.

It can be connected in an Ethernet network. It allows the sending of measurement data to a central computer that receives and manages the information obtained from various machines creating complete reports, as well as a database of vehicles and clients.

Possibility to adapt the software to the internal regulations of the technical inspection of vehicles.

Temperature and r.p.m. meter

Certification and commissioning
Module F

Auto Zero Automatic



Software adaptations

Possibility of analysis and study, under budget, for adaptation to new regulations in any region and/or country

Standard Equipment

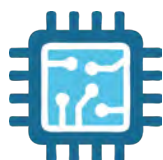
- Smoke analyzer module
- Sampling probe
- Control cabinet
- Commissioning certificate for module F SMOKEMETER
- Temperature and rpm meter

Software

- Auto zero automatic
- Sending and processing data and graphics in real time
- Possibility of sending encrypted data to the server using the AES encryption method (Advanced Encryption Standard)
- 100% compatible with management systems and databases
- Assigning permissions to different user levels
- Possibility of assigning the results obtained to a vehicle plate before or after each test
- Customization of the test duration to the minimum and/or maximum time to optimize working time
- Intuitive, simple and fast configuration software
- Graphical and numerical display of results
- Very intuitive control software guided by graphic icons
- Common database (on network as well as in local mode) that's allows us to save all client and vehicle data and have easy access to them to be able to make comparisons between old and new tests.
- Customized advertising on screen
- Database that allows to store cards with customer and vehicle data. All tests are registered and easy to search.
- Translation module through which the user can translate the program into their own language
- Connection RS-232 y Ethernet



Electronics



Best Processors

New high-speed processor
Increase the response and process of each vehicle test



RAM memory

New memory 16 times faster



Increased Connections

Connections Ethernet (TCP-IP) / RS-232 Wifi on the main board



Flash Memory

New memory 4 times faster

Debido a la continua evolución de nuestros productos, las características técnicas y de diseño podrían estar sujetas a modificaciones, sin previo aviso.

Technical Data

Environmental working conditions	Temperature: from 5 up to 40°C Humidity: 0-95 % Pollution: < 2%
Storage temperature	-32 °C a 50 °C
Optics	Light source Green LED 560 nm
Detector	Silicon Photodiode
Response time	de 10 % a 90%, 0,25 ms
Acoustic noise	53 dB
Warm-up period	3 - 6 min. depending on temperature
Standard Test Probe	800 mm. 10 mm. Ø
Opacity	Range of 0 - 9,99 m ⁻¹ Resolution 0,01 m ⁻¹
Power Supply	220 V. 50 Hz




Other Information

Official opacity test
Electronic test of measurement accuracy
Self-diagnosis of the equipment
Complies with the following standards: DIN 57.411, UNE 82.503, SAE J1677 US / CANADA
Measurement of opacity in % and absorption coefficient k calculated according to Beer-Lambert's law

Dimensions

Smokemeter dimensions	500 x 250 x 450 mm.
Dimensions Smokemeter packaged	480 x 390 x 300 mm.
Weight packed equipment	8,5 kg.
Cabinet dimensions	730 x 580 x 1.530 mm
Packed cabinet dimensions	1.200 x 800 x 380 mm.
Weight Cabinet packed	90 kg.

Optional Equipment

		Multi-function wireless device, keyboard, mouse and remote control
	GEN-TD	Data display terminal
	GEN-STD	Second Data display terminal
	GEN-ENAC	ENAC certified
	GEN-CPS	Commissioning certificate for Smokemeter
	GEN-LCS	Calibration lenses
	GEN-EST	Voltage Stabilizer
	GEN-LCS	Calibration lenses
	RY3	R.P.M. and Accessories kit for r.p.m. measurement

Software



More Productive
Repetition of partial tests



Safer
Ryme application can encrypt data, make them safer



More Intuitive
Incorporation of graphic icons. RYME applications share the same menus..



More Compatible
Compatibility with more than 95% of the database management systems on the market today, ORACLE, SQL SERVER, Postgre, SQLite, etc. OS support for 32 and 64 Bits and with Android, Windows...



Online support
Possibility of remote connection from our technicians with your equipment
Consult conditions



More Reliable & Precise
Improvement in the process of calibrating the main board Allows the adjustment of the weighing and force calibration to very precise values.



868800 R.P.M. y Accessory kit for RPM measurement



GEN-SAH Extendable Smokemeter system for vehicles with vertical exhaust behind the cab.

Approved probe extension 1,8 m.

Approved probe extension 2,5 m.

Approved probe extension 3 m.



GEN-SSA Software for sending encrypted and non-encrypted measurements that guarantees the saving of the results of each test and their sending to the management program even in possible power cuts or other...