

The ELECTRO-HYDRAULIC control device is used to check the condition of vehicle axles and their components. It allows to observe the possible wear and tear and the play caused by them

Four test plates installed on the floor at ground level are guided in their transverse movements with the switches mounted on the hand lamp.

The latest technologies have been used to create this equipment, allowing a maximum accuracy in finish, achieving a strong machine with excellent appearance and with silent and precise functioning.

Includes four movements per plate with a single remote control

Operation	Electro Hydraulic
Max load per axle	18 Tn
Motor	2,2 Kw
Hydraulic Pump	15 l. / minute


Standard Equipment

- 4 Electro hydraulic play detectors with 4 movements
- Hydraulic group
- Electric box
- Wired control torch


Technical Data

Maximum axle load	18 Tn.
Motores	2,2 Kw
Voltage	400 V. 50 Hz. Threephasic
Thermal Protector	10 A
Protection Fuse	3 A
LED Lamp	12 V / 6 W
Tank capacity hydraulic unit	15 l. SAE-10 oil
Hydraulic Pump	15 l / minute
Power force	30.000 N
Max. Side movement	95 mm.
Stroke speed	12,75 cm / s
Wired lamp operation and control	

Mechanics

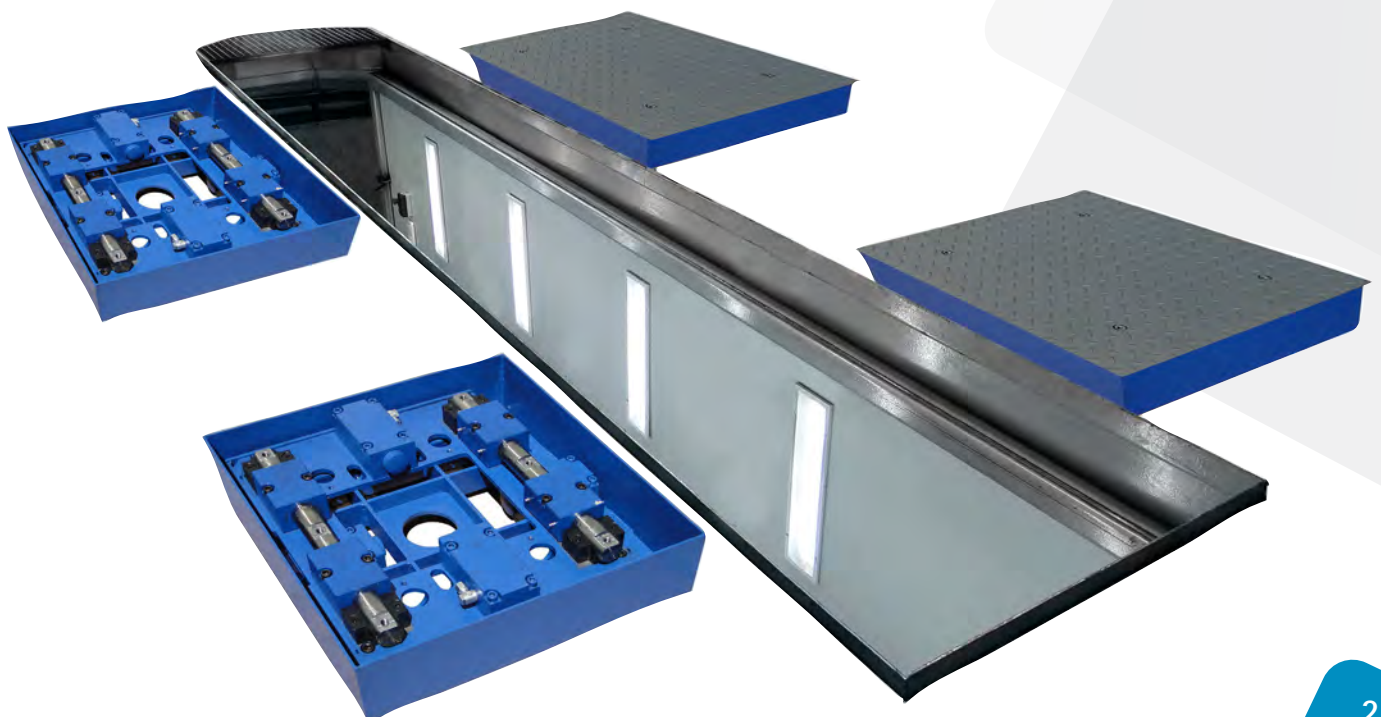


Epoxy Paint
Powder-coated finish ensures optimal and long-lasting protection



Perfect Fit Assembly
Mechanical design using Perfect-Fit, which guarantees the assembly and perfect final finish on all our equipment

It includes an additional set of plates for the movement of the second axle in order to check both axles without moving the vehicle. The equipment is governed by a single Hydraulic unit for the whole set of plates.
* As long as the wheelbase matches the distance between the plates

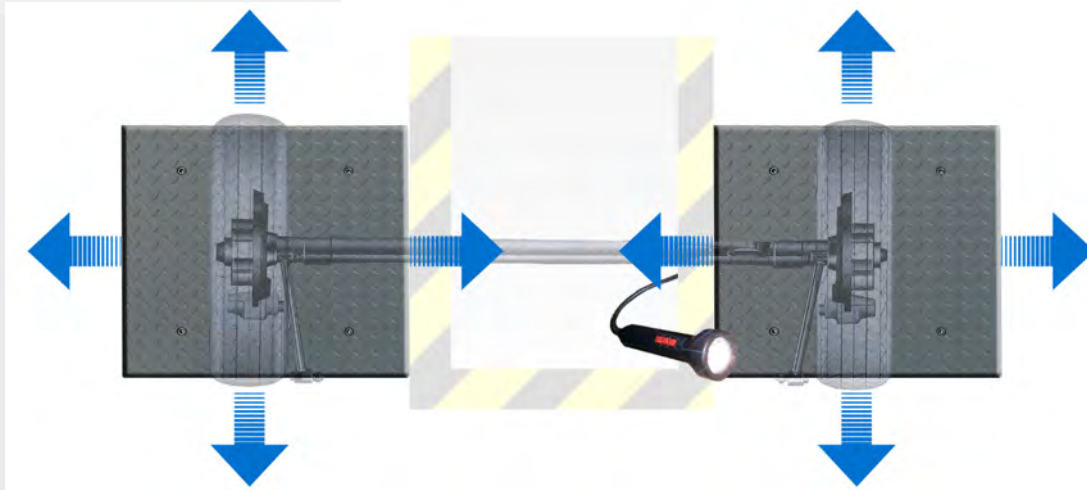


Debido a la continua evolución de nuestros productos, las características técnicas y de diseño podrían estar sujetas a modificaciones, sin previo aviso.

Dimensions

Plate Dimensions	820 x 820 x 196 mm.
Packed equipment dimensions	1.280 x 1.100 x 980 mm.
Plate weight (unit)	290 Kg
Packed equipment weight	1.260 Kg

Longitudinal, transverse movement on both plates



Optional Equipment



DHL-PGH

Pupitre Hydraulic group
Dimensions: 420 x 550 x 1.460 mm.
Weight 92 Kg

DHL-230

Power supply 230 V. Threephasic

DH-LI

Wireless control LED flashlight with rechargeable lithium battery.



DHL-BOC

Civil work frame

GEN-40LRH

80m. hydraulic hose assemblies and fittings

Debido a la continua evolución de nuestros productos, las características técnicas y de diseño podrían estar sujetas a modificaciones, sin previo aviso.