

The ELECTRO-PNEUMATIC control device is used for checking the condition of the axles of 3,500 kg MMA light vehicles. It allows to observe the possible wear and tear caused by them.

The check plates installed on the floor at ground level are guided in their transverse movements with the switches mounted on the hand lamp.

The latest technologies have been used to create the equipment, thus adding maximum precision in its finish, achieving a robust machine with excellent aesthetics, quiet and precise Operation.

Operation **Electro Pneumatic**

Max load per axle **2 Tn.**

Pneumatic Pressure (min./max) **7/12 Bar**

Standard Equipment

- 2 electro-pneumatic play detectors with 4 movements
- Electric box
- Wired control torch
- Civil work frame

Technical Data

Maximum axle load	2 Tn.
Voltage	230 V. - 50 Hz
Protection Fuse	3 A
LED Lamp	12 V / 6 W
Pneumatic Pressure (Min / Max)	7 / 12 bar
Minimum air flow	250 L. / minute
Power force	2.500 N
Max. Side movement	50 mm.
Wired lamp operation and control	
Longitudinal and transverse movement of both plates	

Mechanics



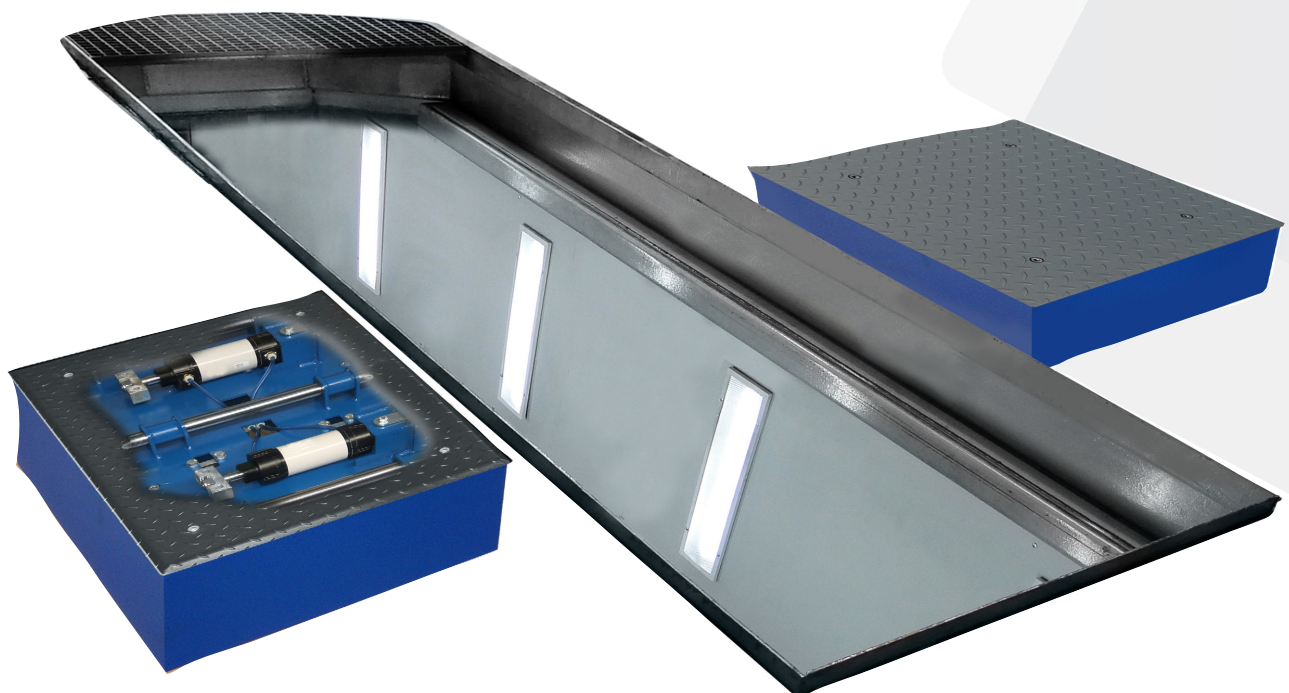
Epoxy Paint

Powder-coated finish ensures optimal and long-lasting protection



Perfect Fit Assembly

Mechanical design using Perfect-Fit, which guarantees the assembly and perfect final finish on all our equipment

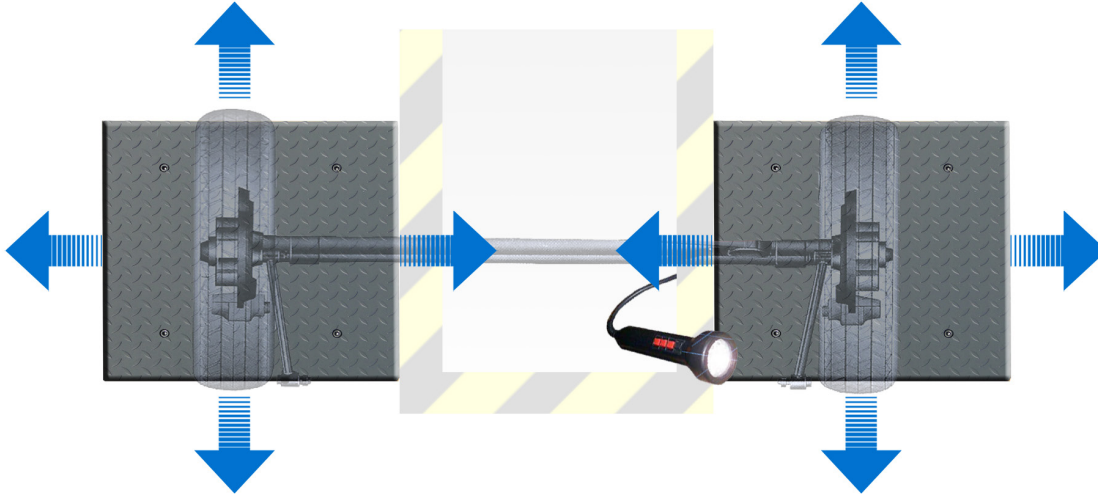


Debido a la continua evolución de nuestros productos, las características técnicas y de diseño podrían estar sujetas a modificaciones, sin previo aviso.

Dimensions

Plate Dimensions	965 x 670 x 213 mm.
Packed equipment dimensions	980 x 710 x 450 mm.
Plate weight (unit)	105 Kg
Packed equipment weight	240 Kg

Longitudinal, transverse movement on both plates



Optional Equipment



DH-LI

Wireless control LED flashlight with rechargeable lithium battery.

DLJ5N-BOC

Civil work frame

GEN-40MNR

40 m. hydraulic hose assemblies and fittings

Debido a la continua evolución de nuestros productos, las características técnicas y de diseño podrían estar sujetas a modificaciones, sin previo aviso.