

The ELECTRO-HYDRAULIC control device is used to check the condition of the axles of 3,500 kg MMA light vehicles. It allows to observe the possible wear and tear caused by them.

Four test plates installed on the floor level at the same level, are guided in their movements forward or lateral / cross with switches on the hand torch.

The latest technologies have been used to create this equipment, allowing a maximum accuracy in finish, achi ving a strong machine with excellent appearance and with silent and precise functioning.

It includes four movements per plate with a one single remote control

It includes an additional set of plates for moving the second axis in order to check the two axes without moving the vehicle. The equipment is governed by a single hydraulic unit for the whole plate.

| Operation         | Electro Hydraulic |
|-------------------|-------------------|
| Max load per axle | 4 Tn.             |
| Motor             | 2,2 Kw            |
| Hydraulic Pump    | 15 l. / minute    |

## Standard Equipment

- 4 electro-hydraulic play detectors with 4 movements
- Hydraulic group
- Electric box
- Wired control torch

## Technical Data

|                                  |                           |
|----------------------------------|---------------------------|
| Maximum axle load                | 4 Tn.                     |
| Motor                            | 2,2 Kw                    |
| Voltage                          | 230 V. 50 Hz. Threephasic |
| Thermal Protector                | 10 A                      |
| Protection Fuse                  | 3 A                       |
| LED Lamp                         | 12 V / 6 W                |
| Tank capacity hydraulic unit     | 15 L. SAE-10 oil          |
| Hydraulic Pump                   | 12 L / minute             |
| Power force                      | 12.500 N                  |
| Max. Side movement               | 100 mm.                   |
| Stroke speed                     | 26 cm / s                 |
| Wired lamp operation and control |                           |

## Mechanics

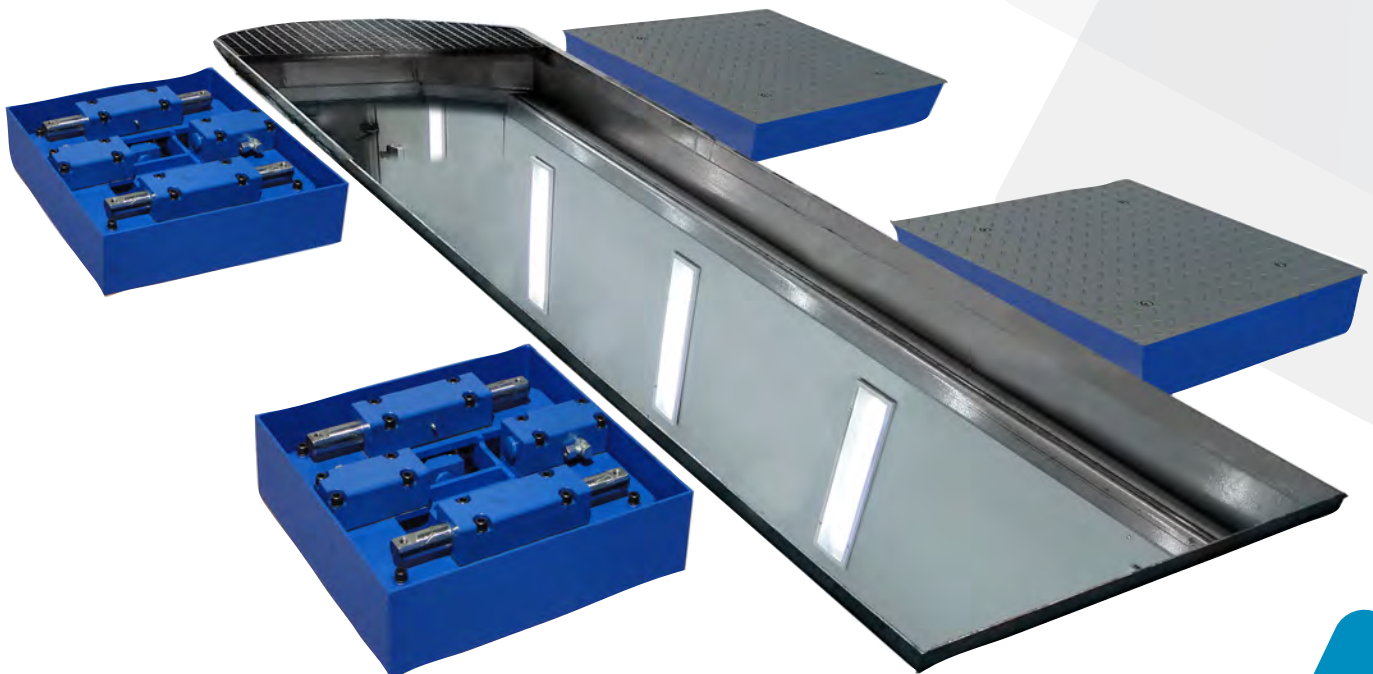


### Epoxy Paint

Powder-coated finish ensures optimal and long-lasting protection

### Perfect Fit Assembly

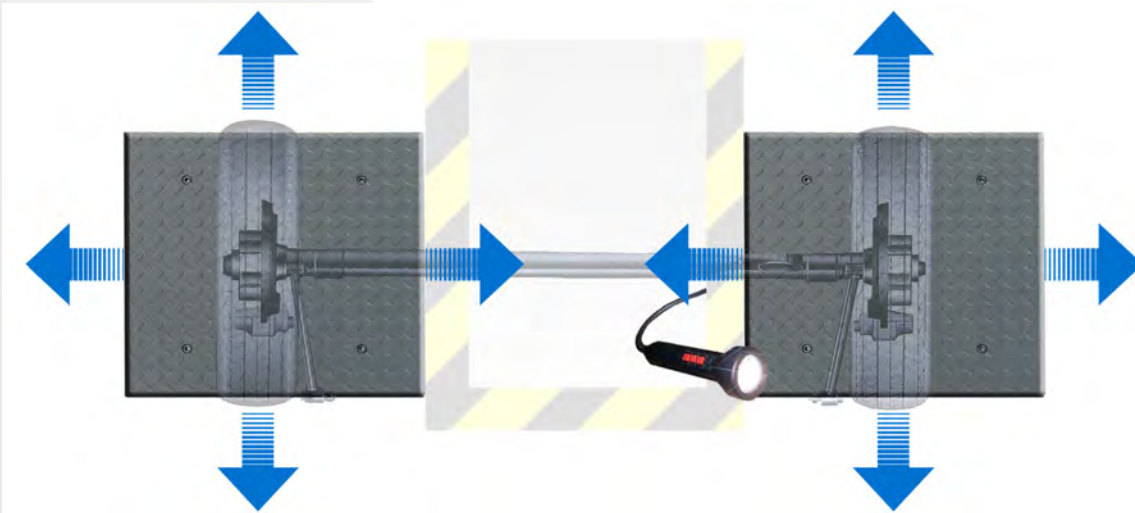
Mechanical design using Perfect-Fit, which guarantees the assembly and perfect final finish on all our equipment



## Dimensions

|                             |                           |
|-----------------------------|---------------------------|
| Plate Dimensions            | 900 x 650 x 160 m m.      |
| Packed equipment dimensions | (2) 1.280 x 980 x 980 mm. |
| Plate weight (unit)         | 160 Kg                    |
| Packed equipment weight     | 710 Kg                    |

### Longitudinal and transversal movement in all plates



## Optional Equipment



DHL-PGH

Pupitre Hydraulic group  
Dimensions: 420 x 550 x 1.460 mm.  
Weight 92 Kg

DHL-230

Power supply 230 V. Threephasic

DH-LI

Wireless control LED flashlight with rechargeable lithium battery.



DHL-BOC

Civil work frame

GEN-40LRH

40 m. hydraulic hose assemblies and fittings