

The ELECTRO-HYDRAULIC control unit is used to check the condition of the axles of 3,500 kg MMA light vehicles. It allows to observe the possible wear and tear caused by them.

Two test plates installed on the floor at ground level are guided in their longitudinal and transversal movements by the switches mounted on the hand lamp.


The latest technologies have been used to create this equipment, allowing a maximum accuracy in finish, achieving a strong machine with excellent appearance and with silent and precise functioning.

## Standard Equipment


- 1 electro-hydraulic play detector with 4 movements
- 1 electro-hydraulic play detector with 2 movements
- Hydraulic group
- Electric box
- Wired control torch

## Technical Data


Maximum axle load	4 Tn.
Motor	2,2 Kw
Voltage	400 V. 50 Hz.
Thermal Protector	10 A
Protection Fuse	3 A
LED Lamp	12 V / 6 W
Tank capacity hydraulic unit	15 L. SAE-10 oil
Hydraulic Pump	15 L. /minute
Power force	12.500 N
Max. Side movement	100 mm.
Stroke speed	26 cm / s
Wired lamp operation and control	

Operation	Electro Hydraulic
Max load per axle	4 Tn. 
Motor	2,2 Kw
Hydraulic Pump	15 l. / minute

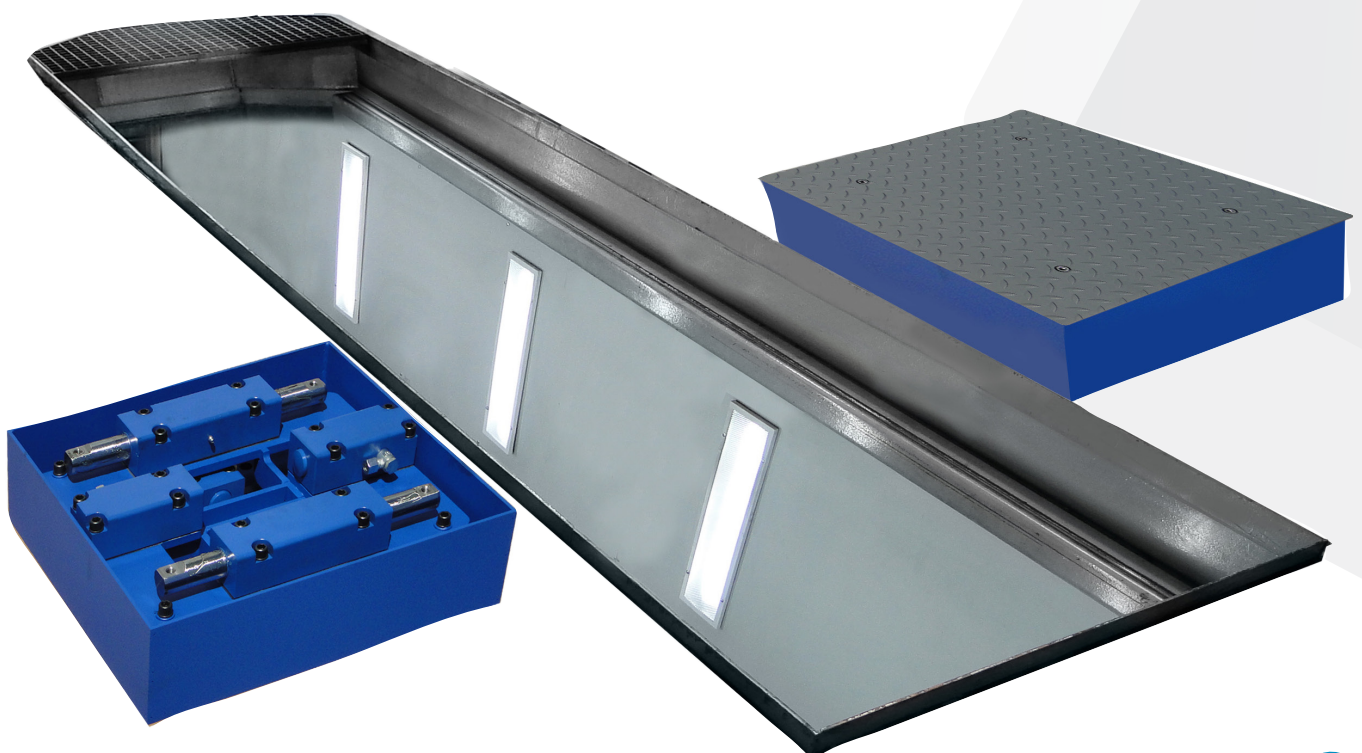
### Mechanics



**Epoxy Paint**  
Powder-coated finish ensures optimal and long-lasting protection



**Perfect Fit Assembly**  
Mechanical design using Perfect-Fit, which guarantees the assembly and perfect final finish on all our equipment

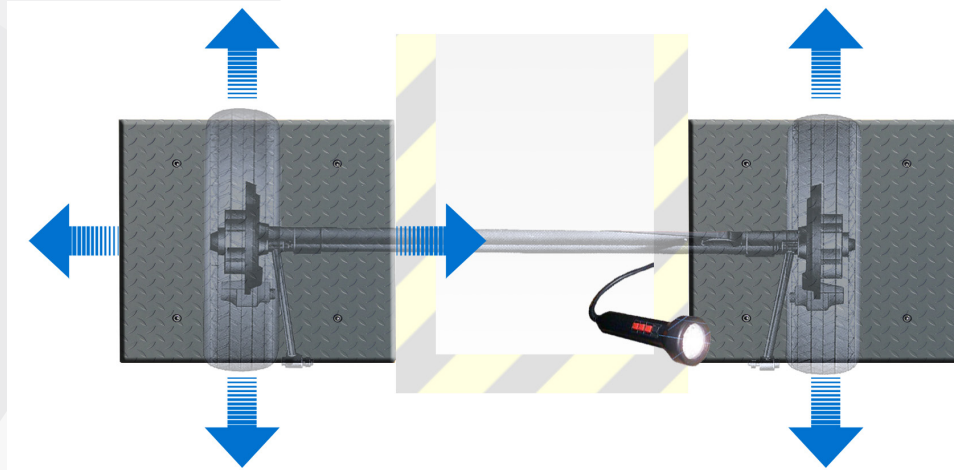


Debido a la continua evolución de nuestros productos, las características técnicas y de diseño podrían estar sujetas a modificaciones, sin previo aviso.

## Dimensions

Plate Dimensions	650 x 650 x 160 mm.
Packed equipment dimensions	1.150 x 845 x 930 mm.
Plate weight (unit)	132 Kg
Packed equipment weight	295 Kg

Longitudinal and transverse movement of the left plate and longitudinal movement of the right plate



## Optional Equipment



**DHL-PGH** Hydraulic group desk  
Dimensions: 420 x 550 x 1.460 mm.  
Weight 92 Kg

**DHL-230** Power supply 230 V. Threephasic

**DH-LI** Wireless control LED flashlight with rechargeable lithium battery.



**CIM-DHL-01** Civil work frame

**GEN-40LRH** 40 m. hydraulic hose assemblies and fittings

Debido a la continua evolución de nuestros productos, las características técnicas y de diseño podrían estar sujetas a modificaciones, sin previo aviso.