



Up to 16 T



## Description

Ideal for **testing and determining the status of the speedometer** and **tachograph**, quantifies the time, the distance travelled and the price of the journey made.

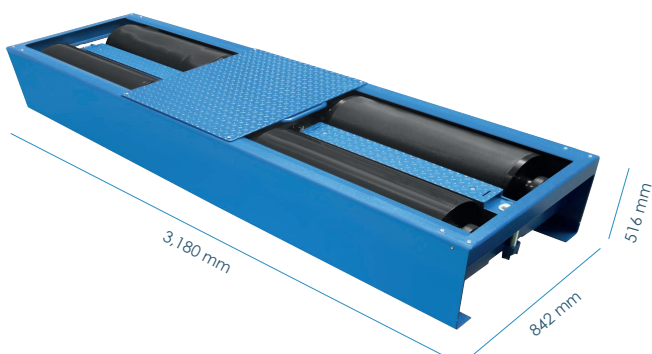
The **speedometer** compares the **speed** indicated by the technician and the real speed, finding the difference between both in %.

The **tachograph** test registers the **distance** indicated by the technician and the real distance travelled by the vehicle, finding the difference between both in %.

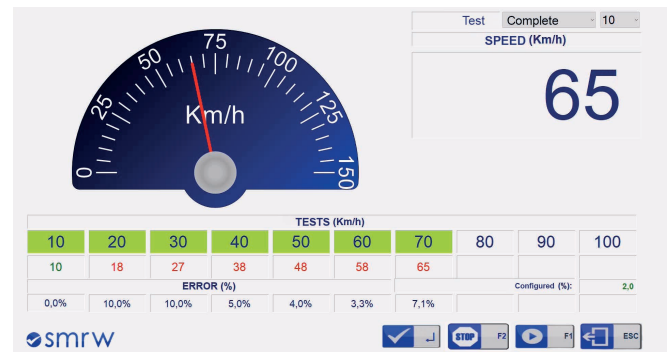
The measurement system is based on a high-resolution encoder and incorporates a photocell to calculate the error introduced by the deformation of the ties.

## Technical data and Dimensions

Max load per axle	16 T
Test max speed	0 - 120 km/h
Track width min / max	805 / 2,635 mm
Range of measurement	1 km/h 0.1 m
Roller locking system	Pneumatic
Voltage	230 V / 50 Hz
Roller length	900 mm
Rollers diameter	318 mm
Wheelbase Roller	456 mm
Pneumatic supply	8 bar max.
Weight	1,160 kg




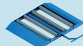
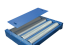

## Software



## Standard Equipment

- ✓ Universal speedometer
- ✓ Control console
- ✓ Rollers covers platform
- ✓ Electronic control and SMRW software
- ✓ Pneumatic lift for easy exit
- ✓ Safety bumpers to prevent side ejection
- ✓ Special rollers for better grip

## Optional Equipment

Optional equipment	
	Voltage stabilizer
	4x4 free rollers 6WD
	Free rollers for AWD vehicles
	Tacographs speed limiter/tester
	End-of-line console (consult)

## Speedometer Tests

- ✓ Testing and evaluation of results at different speed ranges

## Odometer Tests

- ✓ Testing and evaluation of results for different distances traveled