



Axle Play Detector for Light Vehicles

DLJ5N *(pneumatic)*



Description

The **DLJ5N electro-pneumatic** play detector is used to check the condition of the axles of **light vehicles and their components**.

It allows to observe possible wear and looseness caused by the same. **Two test plates** installed on the floor at ground level are guided in their transverse movements by switches mounted on the hand lamp.

DLJ5N plates movements:  





Technical Data and Dimensions

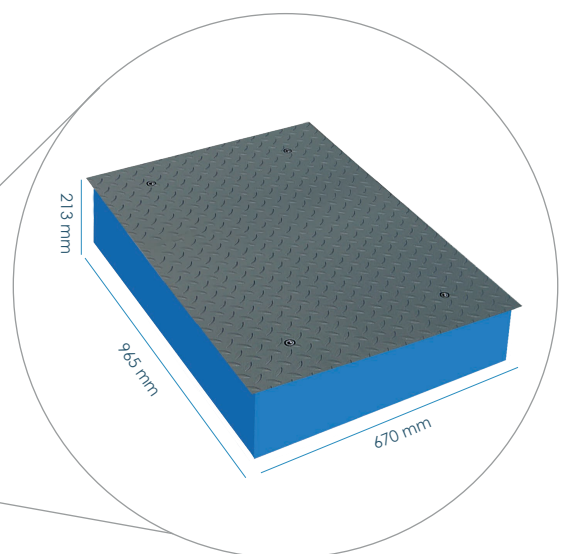
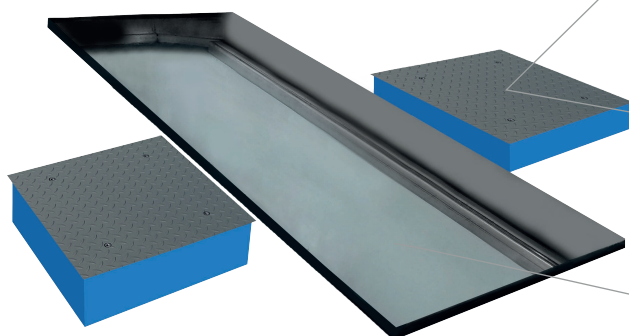
Max axle load	2 T
Voltage	230 V - 50 Hz
Protection fuse	5 A
LED lamp	12 V - 6 W
Nominal pressure	8 bar
Pneumatic pressure min/max	7 / 12 bar
Minimum air flow rate	250 l/min
Pushing force	2,500 N
Side shift	50 mm
Displacement speed	2.6 cm/s
Frame dimensions (civil work + equipment)	965 x 670 x 213 mm
Consumption	Only in use pulses

Standard Equipment

- ✓ 2 electro-pneumatic plates
- ✓ Electric box
- ✓ Torch/Controller

Optional Equipment

Optional equipment	
	LED torch wireless
	Torch base
	Torch charger
	Floor camera with wireless control
	Display + camera system control
	Plates dimensions and weight: 903 x 606 mm 115 kg



Consult our possibilities of prefabricated or civil works pits.