



Axle Play Detector for Heavy Vehicles DHU TOTAL 4



Up to 18 T



Description

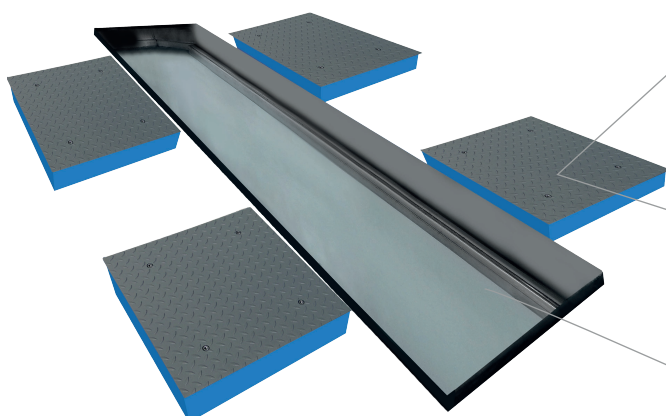
The **DHU TOTAL 4 electro-hydraulic** play detector is used to check the condition of the axles of **vehicles up to 18 T per axle**.

It allows to observe possible wear and looseness caused by the same. **Two test plates** installed on the floor at ground level are guided in their four transverse movements by switches mounted on the hand lamp.

DHU TOTAL plate movements:

Technical Data and Dimensions

Max load per axle	18 T
Power engine	2.2 kW
Voltage (three-phase)	400 V - 50 Hz
Thermal protector	4.5 - 6.3 A
Protection Fuse	10 A
LED lamp	12 V - 6 W
Tank capacity hydraulic group	15 - 18 l SAE-10 oil
Hydraulic pump	15 l/min
Pushing force	30,000 N
Side shift	105 mm
Displacement speed	6.4 cm/s
Frame dimensions	750 x 750 x 165 mm
Consumption	2.2 kW

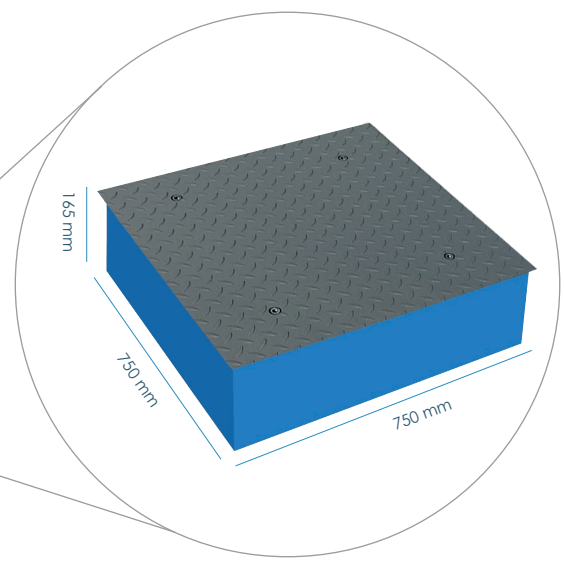


Standard Equipment

- 4 electro-hydraulic plates
- Hydraulic unit
- Electric box
- Torch/Controller

Optional Equipment

Optional equipment	
	Hydraulic unit desk: 420 x 600 x 1,460 mm 92 kg
	Power supply 230 V Three-phase
	Linterna LED control inalámbrico
	LED torch wireless
	Torch charger
	Floor camera with wireless control
	Display + camera system control
	Plates dimensions and weight: 850 x 850 mm 275 kg



Consult our possibilities of prefabricated or civil works pits.