



Up to 13 T



Description

The **FRS Heavy Vehicle Brake Tester** is designed to check the brake condition of vehicles **with a maximum axle load of up to 13 T per axle**.

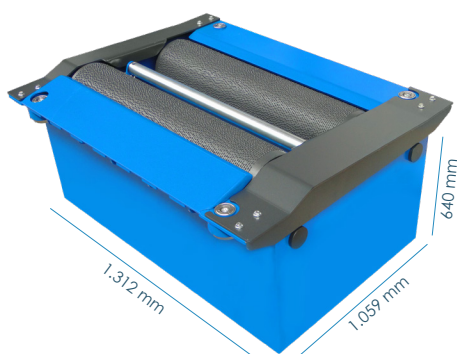
The braking force is obtained from the electrical signal provided by a strain gauge to the data acquisition system **in a 2-bench structure**.

The most significant information obtained is:

- ✓ Braking force on manual and pedal brakes
- ✓ Rolling resistance
- ✓ Ovality and weight measurement op*
- ✓ Pedal effort op*
- ✓ Braking performance

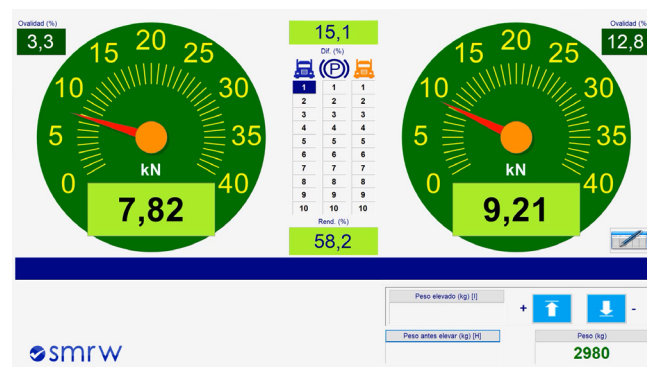
Technical data and Dimensions

Max load	13 T
Engine Power (Independent)	2 x 9 kW
Test speed	3 km/h
Max/min track width	2.840 / 850 mm
Voltage	400 V - 50 Hz
Protection fuse	3 x 50 A
Thermal protector	2 x 18 - 25 A
Roller Diameter / Length	208 / 990 (usable 990) mm
Distance between center	407 mm
Rear roller lift	50 mm
Dimensions and weight (per frame)	1.312 x 1.059 x 640 mm 800 kg
Adhesion coefficient	0,9 wet 0,7 dry
Measurement scale	0 - 8 kN / 0 - 40 kN
Step / measurement error	0,01 kN / 1%
Consumption	18 kW



*Galvanized finish available

Software



Optional Equipment

- ✓ Brake Tester
- ✓ Electronic control console + wireless controller
- ✓ Electronic control and SMRW software
- ✓ Motor soft starter
- ✓ Self-locking rollers for easy exit

Optional Equipment

Ref.	Optional Equipment
ALU-02-00000	Side Slip Tester Integration kit
COM-04-12003	Voltage stabilizer
FRS-BAS	Axle weighing scale (4 load cells)
GEN-60	60 Hz Power supply
ACU-05-00001	Foot pedal dynamometer + receiver
ACL-03-00000	4x4 freewheels
COM-05-01001	Wireless pressure transducer 1 - 4 pcs.
COM-05-01002	USB receiver compatible with 15 devices
ACU-10-00000	Sensor base/charger with alert
ACU-12-00000	Roller cover
CAL-04-00000	Calibration weight 10 kg
CAL-01-00000	Calibration weight 30 kg
CAL-03-00000	Heavy vehicles calibration lever
8599	End-of-line console (consult)