



Up to 1 T per axle



Description

The **FRQ+M for Vehicles and Motorcycle Brake Tester** is specially designed to check the brake condition of **Tri-cycles, Motorcycles and Quads**.

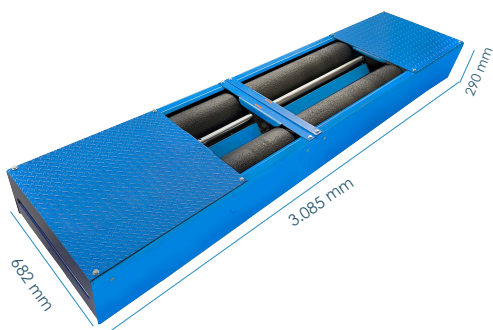
The braking force is obtained from the electrical signal provided by a strain gauge to the data acquisition system. **Its design is adapted for use on 1 or 2 wheel axles.**

The most significant information obtained is:

- ✔ Braking force on manual and pedal brakes
- ✔ Rolling resistance
- ✔ Measurement of ovality and weight op*
- ✔ Pedal effort (hand clamp and foot pedal) op*
- ✔ Braking performance

Technical Data and Dimensions

Maximum axle load	1 T
Engine power	2 x 4,8 kW
Test speed	5,4 Km/h
Track max/min	21.505 / 103 mm
Voltage	400 V - 50 Hz
Protection fuse	3 x 25A
Thermal protector	1 x 9 - 12,5 A
Roller diameter	208 mm
Length rollers 1 and 2 (useful)	446 (419) / 1000 (947) mm
Distance between rollers	400 mm
Dimensions and weight	3.085 x 682 x 290 mm 400 kg
Adhesion coefficient	0,9 dry 0,7 wet
Measuring scale	3,5 kN
Step / measurement error	0,01 kN / 1 %
Consumption	9,2 kW








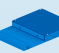


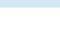
Software



Standard Equipment

- ✔ Brake Tester
- ✔ Control console
- ✔ Electronic control and SMRW software
- ✔ Self-locking rollers for easy exit

Optional Equipment

Ref.	Optional Equipment
 COM-04-12003	Voltage stabilizer
FRM-SA	Start-up sensitizer
FRM-SA230	Sensitizer start 230 V
GEN-230	Start-up power supply 230 V
GEN-60	Power supply 60 Hz
 FRM-BAS	Axle weighing scales (8 load cells)
 COM-05-01003	Pedal dynamometer + receiver
 COM-05-01005	Hand-held dynamometer + receiver
 COM-05-03015	Front wheel clamp
 ACL-05-00001	Pneumatic clamp
 CAL-04-00000	Calibration weight 10 Kg
 CAL-01-00000	Calibration weight 30 Kg
 CAL-02-00000	Light calibration lever