



Up to 1 T



Description

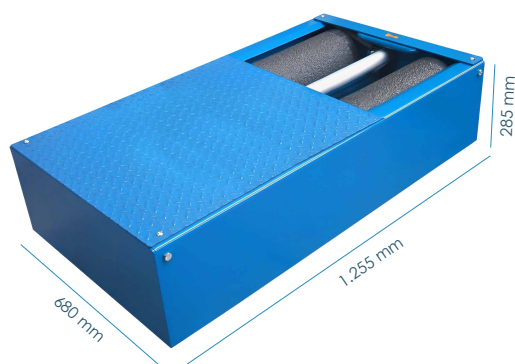
The **FRM Motorcycle Brake Tester** is designed to verify the brake condition of motorcycles, **allowing a maximum step load of up to 1 T**. The braking force is obtained from the electrical signal provided by a strain gauge to the data acquisition system.

The most significant information obtained is:

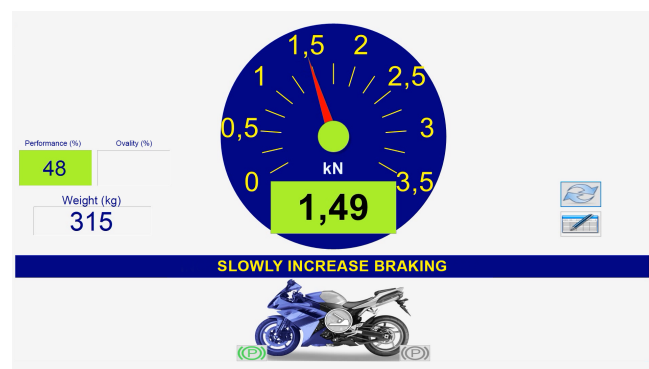
- ✓ Braking force on manual and pedal brakes
- ✓ Rolling resistance
- ✓ Ovality and weight measurement (optional)
- ✓ Pedal effort (hand clamp and foot pedal) op*
- ✓ Braking performance

Technical Data and Dimensions

Maximum load	1 T
Engine power	4,8 kW
Test speed	5,88 Km/h
Maximum wheel width	400 mm
Voltage	400 V - 50 Hz
Fuse protection	3 x 16A
Thermal protector	1 x 9 - 12,5 A
Roller diameter/length	208 / 440 mm
Dimensions and weight	1.255 x 680 x 285 mm 230 kg
Adhesion coefficient	0,9 dry 0,7 wet
Max. braking forces	3,5 kN
Step / Measurement error	0,01 kN / 1 %
Consumption	4,8 kW







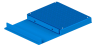



Software



Standard Equipment

- ✓ Brake Tester
- ✓ Control console
- ✓ Electronic control and SMRW software
- ✓ Self-locking rollers for easy exit

Optional Equipment

Ref.	Optional Equipment
 COM-04-12003	Voltage stabilizer
FRM-SA	Start-up sensitizer
FRM-SA230	230 V start-up sensitizer
GEN-230	Start-up power supply 230 V
GEN-60	Power supply 60 Hz
 FRM-BAS	Axle weighing scale with 4 load cells
 COM-05-01005	Hand-held dynamometer + receiver
 COM-05-03015	Front wheel clamp
 ACL-05-00001	Pneumatic clamp
 CAL-04-00000	Calibration weight 10 Kg
 CAL-01-00000	Calibration weight 30 Kg
 CAL-02-00000	Light vehicles calibration lever
8599	End-of-line console (consult)