



Up to 6 T

Description

The **FRL 5.5 Brake Tester for Light Vehicles** is prepared to check the brake condition of light vehicles **allowing a maximum step load of up to 6 T.**

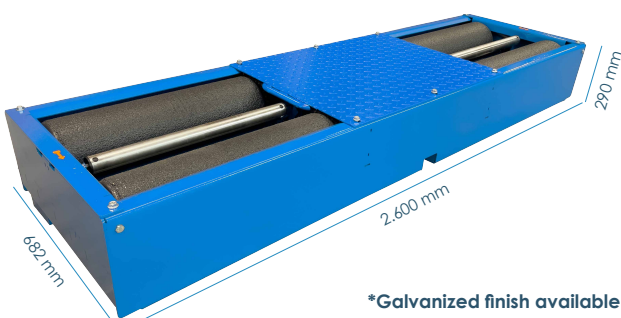
The braking force is obtained from the electrical signal provided by a strain gauge to the data acquisition system.

The most significant information obtained is:

- ✓ Braking force on manual and pedal brakes
- ✓ Rolling resistance
- ✓ Ovality and weight measurement op*
- ✓ Pedal effort (hand clamp and foot pedal) op*
- ✓ Braking performance

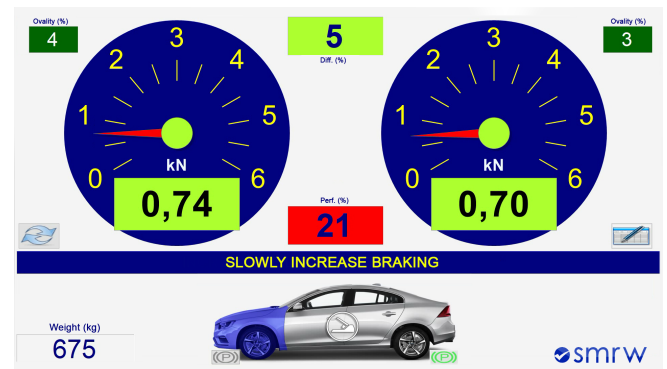
Technical Data and Dimensions

Maximum Load	6 T
Engine Power (Independent)	2 x 5,5 kW
Test speed	4 km/h
Max/min track width	2458 / 870 mm
Voltage	400 V - 50 Hz
Protection fuse	3 x 32 A
Thermal protector	2 x 10 - 16 A
Roller diameter/length	208 / 830 (793 usable) mm
Distance between rollers	400 mm
Dimensions and weight	2.600 x 682 x 290 mm 400 kg
Adhesion coefficient	0,9 dry 0,7 wet
Measurement scale	0 - 12 kN
Step / measurement error	0,01 kN / 1%
Consumption	11 kW



*Galvanized finish available

Software



Standard Equipment

- ✓ Brake Tester
- ✓ Control console
- ✓ Electronic control and SMRW software
- ✓ Self-locking rollers for easy exit

Optional Equipment

	Ref.	Optional Equipment
	COM-04-12003	Voltage stabilizer
	FRL-SA	Motor soft starter
	FRL-SA230	230 V Start-up sensitizer
	GEN-230	230 V Start-up power supply
	GEN-60	60 Hz Power supply
	FRL-BAS	Axle weighing scale with 4 load cells
	COM-05-01003	Foot pedal dynamometer + receiver
	COM-05-01005	Hand-held dynamometer + receiver
	ACL-03-00000	4x4 freewheels
	ACL-12-00000	Software and kit for motorcycles
	ACL-06-00000	Roller cover
	CAL-04-00000	Calibration weight 10 kg
	CAL-01-00000	Calibration weight 30 kg
	CAL-02-00000	Light vehicles calibration lever
	8599	End-of-line console (consult)