

PLAY DETECTORS

The ELECTRO-HYDRAULIC control unit is used to check the condition of the axles of 3,500 kg MMA light vehicles. It allows to observe the possible wear and tear caused by them.

Two test plates installed on the floor at ground level are guided in their longitudinal and transversal movements by the switches mounted on the hand lamp.

The latest technologies have been used to create this equipment, allowing a maximum accuracy in finish, achieving a strong machine with excellent appearance and with silent and precise functioning.

Standard Equipment

- 1 electro-hydraulic play detector with 4 movements
- 1 electro-hydraulic play detector with 2 movements
- Hydraulic group
- Electric box
- Wired control torch

Technical Data

Maximum axle load	4 Tn.
Motor	2,2 Kw
Voltage	230 - 400 V. 50 Hz. Threephasic
Thermal Protector	10 A
Protection Fuse	3 A
LED Lamp	12 V / 6 W
Tank capacity hydraulic unit	15 L. SAE-10 oil
Hydraulic Pump	15 L. /minute
Power force	12.500 N
Max. Side movement	100 mm.
Stroke speed	26 cm / s
Wired lamp operation and control	

Operation Electro Hydraulic

Max load per axle  4 Tn.

Motor 2,2 Kw

Hydraulic Pump 15 l. / minute

Mechanics



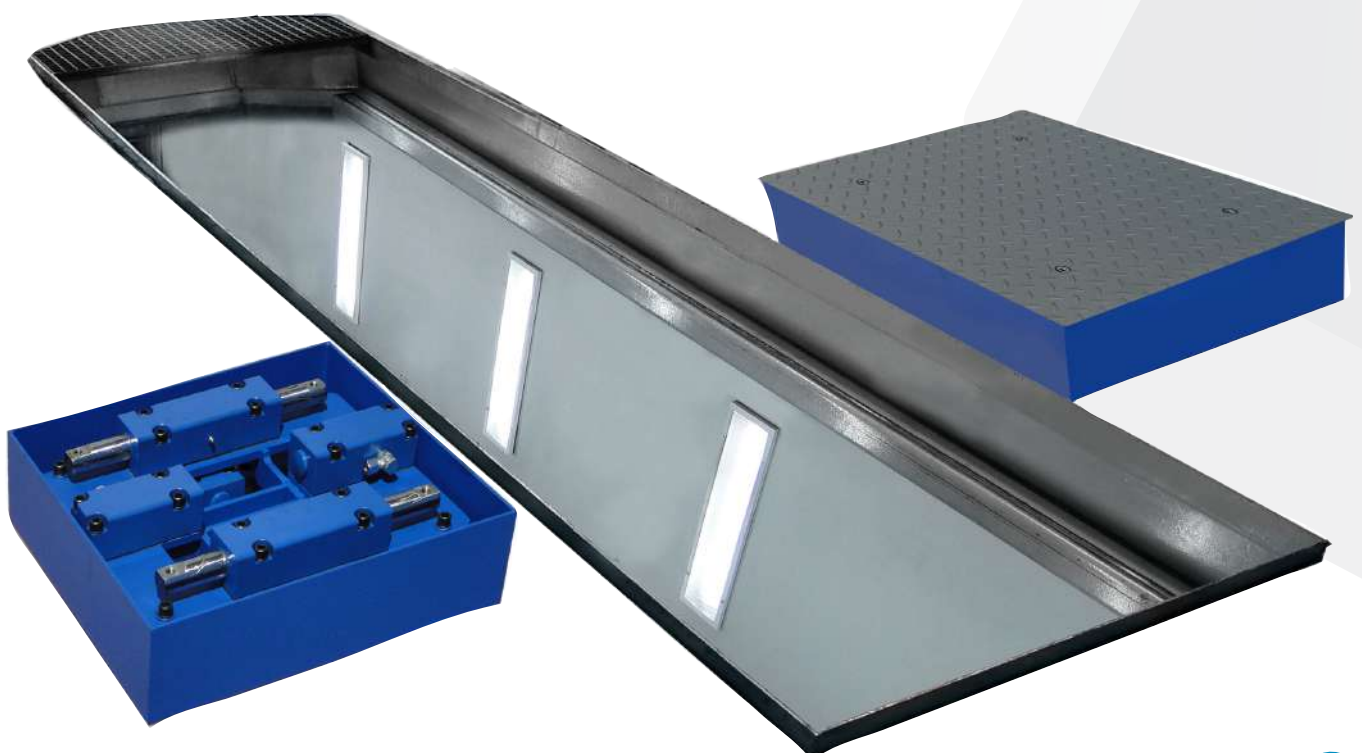
Epoxy Paint

Powder-coated finish ensures optimal and long-lasting protection



Perfect Fit Assembly

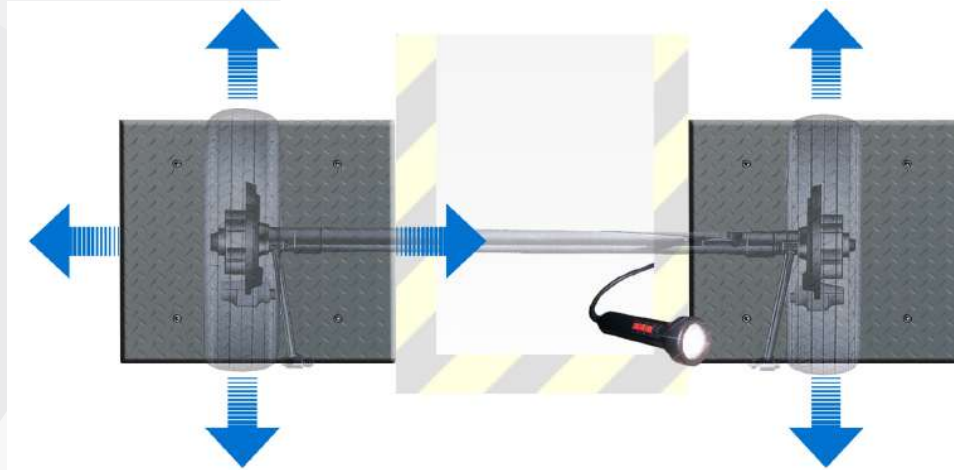
Mechanical design using Perfect-Fit, which guarantees the assembly and perfect final finish on all our equipment



Dimensions

Plate Dimensions	650 x 650 x 160 mm.
Packed equipment dimensions	1.150 x 845 x 930 mm.
Plate weight (unit)	132 Kg
Packed equipment weight	295 Kg

Longitudinal and transverse movement of the left plate and longitudinal movement of the right plate



Optional Equipment



DHL-PGH Hydraulic group desk
Dimensions: 420 x 550 x 1.460 mm.
Weight 92 Kg

DHL-230 Power supply 230 V. Threephasic

DH-LI Wireless control LED flashlight with rechargeable lithium battery.



CIM-DHL-01 Civil work frame

GEN-40LRH 40 m. hydraulic hose assemblies and fittings

Debido a la continua evolución de nuestros productos, las características técnicas y de diseño podrían estar sujetas a modificaciones, sin previo aviso.

The ELECTRO-HYDRAULIC inspection equipment is used to check the condition of the axles of light vehicles of MMA 3,500 kg. It allows to observe the possible wear and play caused by them.

Two test plates installed on the floor at ground level are guided in their transverse movements by the switches mounted on the hand lamp.

The latest technologies have been used to create this equipment, allowing a maximum accuracy in finish, achieving a strong machine with excellent appearance and with silent and precise functioning.

The TOTAL DHL includes four movements per plate with a single control knob.

Operation **Electro Hydraulic**

Max load per axle **4 Tn.**

Motor **2,2 Kw**

Hydraulic Pump **15 l. / minute**

Standard Equipment

- 2 electro-hydraulic play detectors with 4 movements
- Hydraulic group
- Electric box
- Wired control torch

Technical Data

Maximum axle load	4 Tn.
Motor	2,2 Kw
Voltage	230 V. 50 Hz. Threephasic
Thermal Protector	10 A
Protection Fuse	3 A
LED Lamp	12 V / 6 W
Tank capacity hydraulic unit	15 L. SAE-10 oil
Hydraulic Pump	15 L. / minute
Power force	12.500 N
Max. Side movement	100 mm.
Stroke speed	26 cm / s
Wired lamp operation and control	

Mechanics



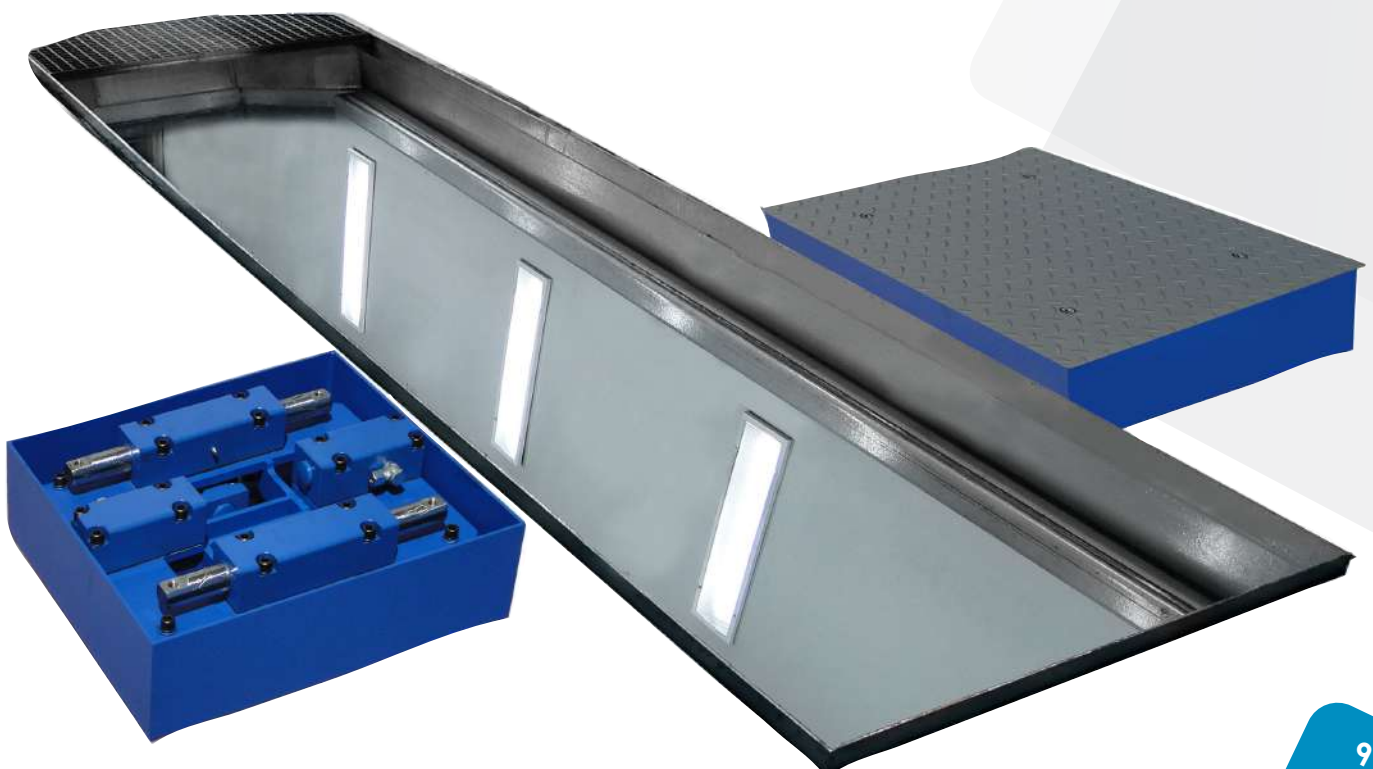
Epoxy Paint

Powder-coated finish ensures optimal and long-lasting protection



Perfect Fit Assembly

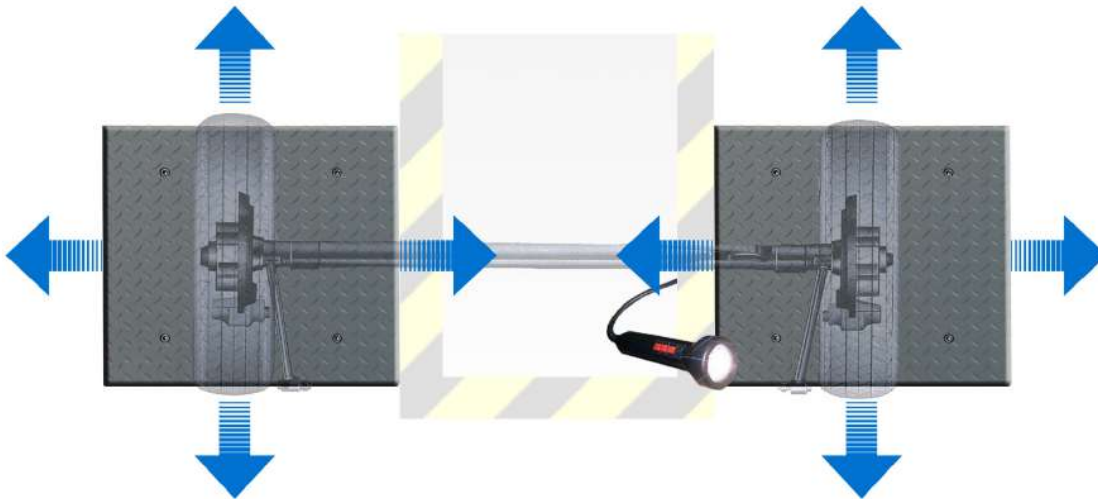
Mechanical design using Perfect-Fit, which guarantees the assembly and perfect final finish on all our equipment



Dimensions

Plate Dimensions	650 x 650 x 160 mm.
Packed equipment dimensions	1.150 x 845 x 930 mm.
Plate weight (unit)	132 Kg
Packed equipment weight	295 Kg

Longitudinal and transversal movement in both plates



Optional Equipment



DHL-PGH

Pupitre Hydraulic group
Dimensions: 420 x 550 x 1.460 mm.
Weight 92 Kg

DHL-230

Power supply 230 V. Threephasic

DH-LI

Wireless control LED flashlight with rechargeable lithium battery.



DHL-BOC

Civil work frame

GEN-40LRH

40 m. hydraulic hose assemblies and fittings

Debido a la continua evolución de nuestros productos, las características técnicas y de diseño podrían estar sujetas a modificaciones, sin previo aviso.

The ELECTRO-PNEUMATIC control device is used for checking the condition of the axles of 3,500 kg MMA light vehicles. It allows to observe the possible wear and tear caused by them.

The check plates installed on the floor at ground level are guided in their transverse movements with the switches mounted on the hand lamp.

The latest technologies have been used to create the equipment, thus adding maximum precision in its finish, achieving a robust machine with excellent aesthetics, quiet and precise Operation.

Operation **Electro Pneumatic**

Max load per axle **2 Tn.**

Pneumatic Pressure (min./max) **7/12 Bar**

Standard Equipment

- 2 electro-pneumatic play detectors with 4 movements
- Electric box
- Wired control torch
- Civil work frame

Technical Data

Maximum axle load	2 Tn.
Voltage	230 V. - 50 Hz Monophase
Protection Fuse	3 A
LED Lamp	12 V / 6 W
Pneumatic Pressure (Min / Max)	7 / 12 bar
Minimum air flow	250 L. / minute
Power force	2.500 N
Max. Side movement	50 mm.
Wired lamp operation and control	
Longitudinal and transverse movement of both plates	

Mechanics



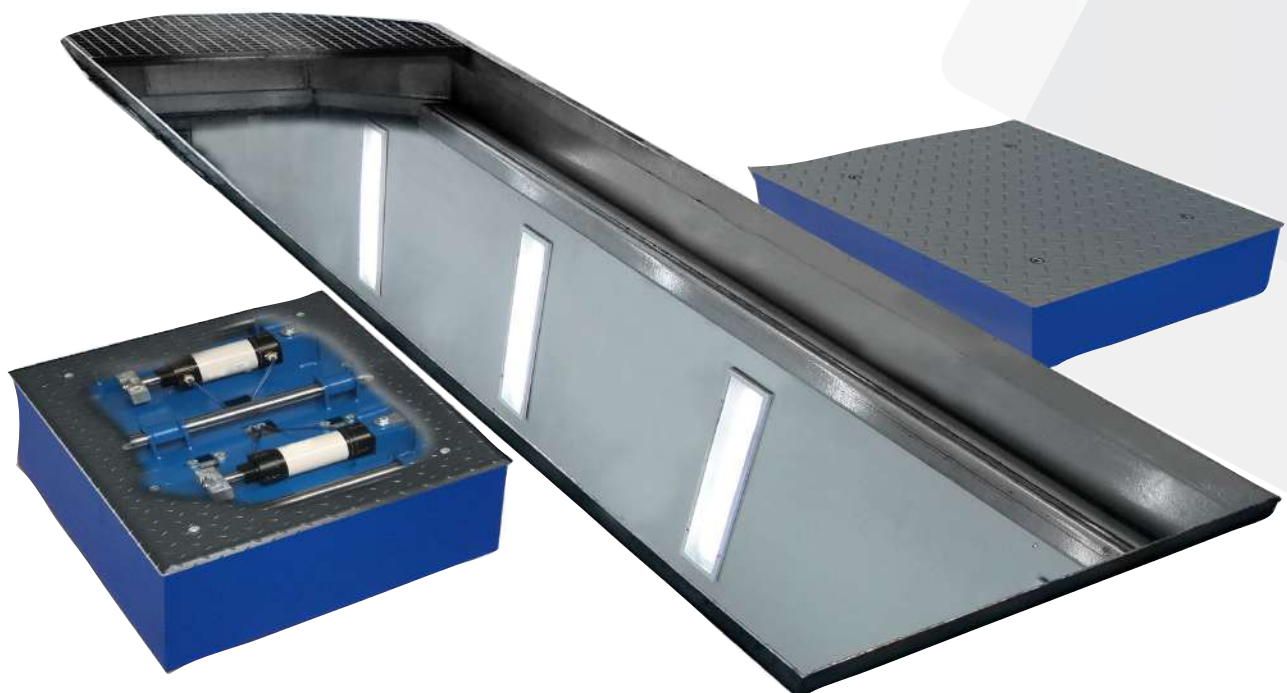
Epoxy Paint

Powder-coated finish ensures optimal and long-lasting protection



Perfect Fit Assembly

Mechanical design using Perfect-Fit, which guarantees the assembly and perfect final finish on all our equipment

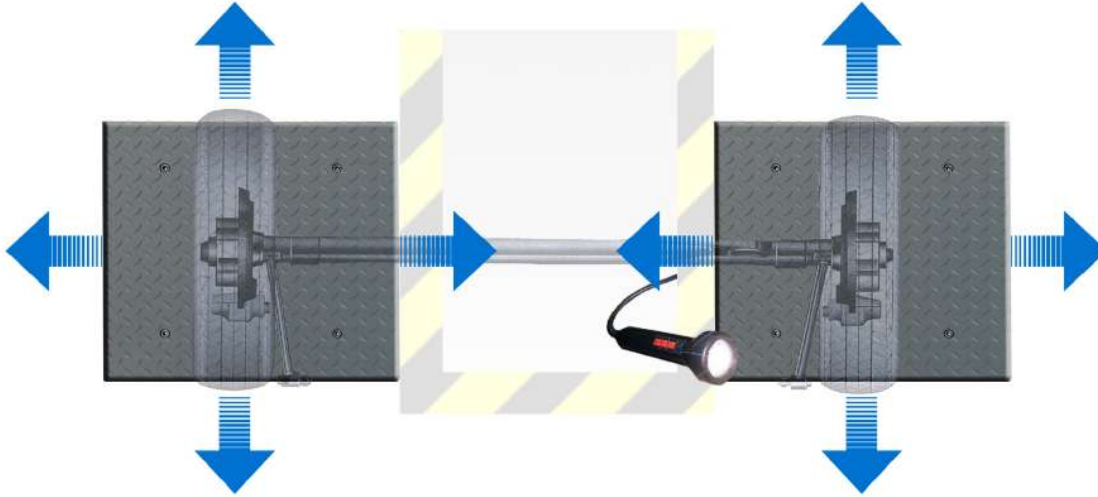


Debido a la continua evolución de nuestros productos, las características técnicas y de diseño podrían estar sujetas a modificaciones, sin previo aviso.

Dimensions

Plate Dimensions	965 x 670 x 213 mm.
Packed equipment dimensions	980 x 710 x 450 mm.
Plate weight (unit)	105 Kg
Packed equipment weight	240 Kg

Longitudinal, transverse movement on both plates



Optional Equipment



DH-LI

Wireless control LED flashlight with rechargeable lithium battery.

DLJ5N-BOC

Civil work frame

GEN-40MNR

40 m. hydraulic hose assemblies and fittings

Debido a la continua evolución de nuestros productos, las características técnicas y de diseño podrían estar sujetas a modificaciones, sin previo aviso.

The PNEUMATIC play detector DLJ5-N has been designed to check the condition of the axle components of light vehicles with an MMA of 3,500 kg, for wear, breakage or play that occurs during the life of the vehicle.

The most advanced technologies have been used to produce the play detectors, that give the strength, durability and reliability equipment, and a flawless finish.

The play detector four plates is a smart composition of the classic two plates detector, since these are located such that all battles and gauges cover any light vehicle, and thus is possible to carry the test performing a unique placement. This reduces test time by almost half.

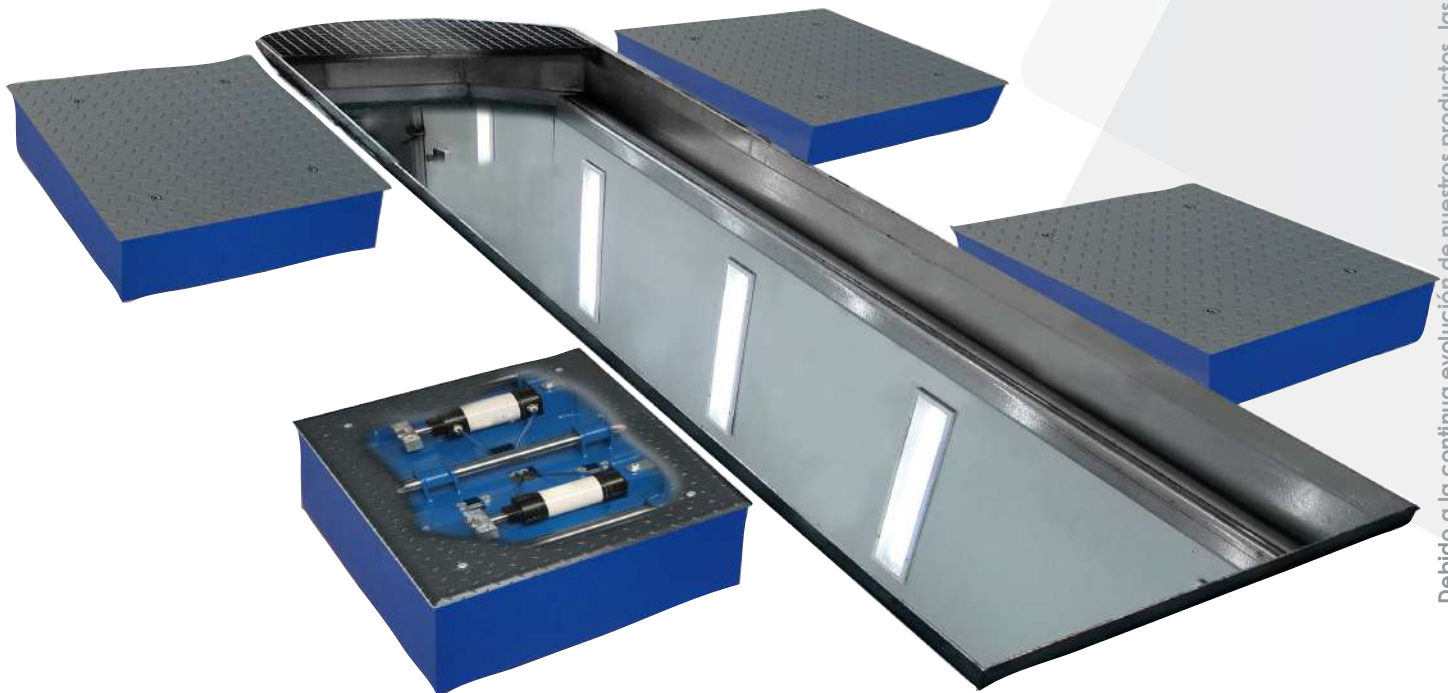
Operation	Electro Pneumatic
Max load per axle	2 Tn.
Pneumatic Pressure (min./max)	7/12 Bar

Standard Equipment

- 4 electro-pneumatic play detectors with 4 movements
- Electric box
- Wired control torch
- Civil work frame

Technical Data

Maximum axle load	2 Tn.
Voltage	230 v - 50 Hz Monophase
Protection Fuse	2 x 3 A
LED Lamp	12 V / 6 W
Nominal pressure	8 bar
Pneumatic Pressure (Min / Max)	7 / 12 bar
Minimum air flow	250 l / minute
Power force	2.500 N
Max. Side movement	50 mm.
Longitudinal and transversal movement in both plates	
Operation and control from a flashlight	



Mechanics



Epoxy Paint

Powder-coated finish ensures optimal and long-lasting protection



Perfect Fit Assembly

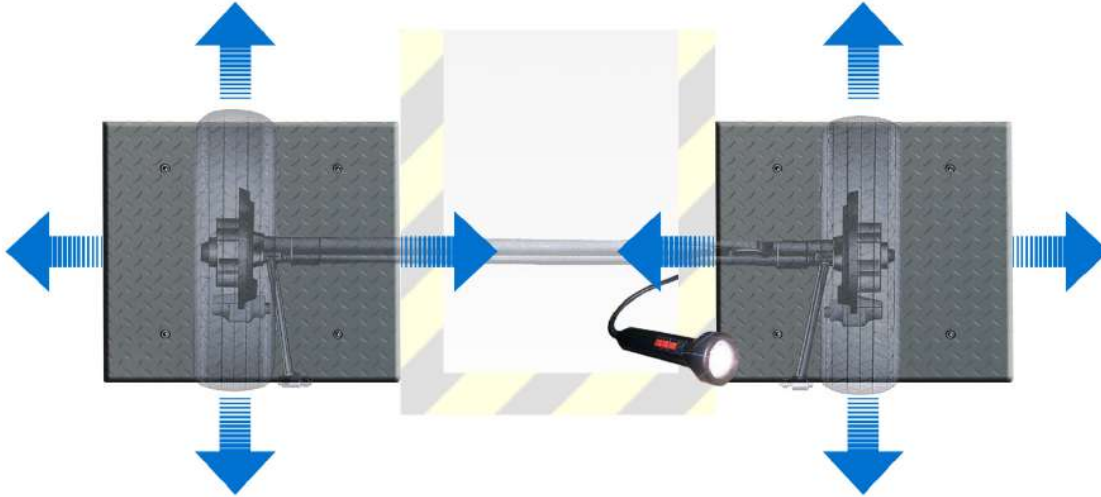
Mechanical design using Perfect-Fit, which guarantees the assembly and perfect final finish on all our equipment

Debido a la continua evolución de nuestros productos, las características técnicas y de diseño podrían estar sujetas a modificaciones, sin previo aviso.

Dimensions

Plate Dimensions	965 x 670 x 213 mm.
Packed equipment dimensions	980 x 710 x 450 mm.
Plate weight (unit)	105 Kg
Packed equipment weight	450 Kg

Longitudinal and transverse movement on all plates



Optional Equipment



DH-LI

Wireless control LED flashlight with rechargeable lithium battery.

DLJ5N-BOC

Civil work frame

GEN-40MNR

40 m. hydraulic hose assemblies and fittings

The ELECTRO-HYDRAULIC control device is used to check the condition of the axles of 3,500 kg MMA light vehicles. It allows to observe the possible wear and tear caused by them.

Four test plates installed on the floor level at the same level, are guided in their movements forward or lateral / cross with switches on the hand torch.

The latest technologies have been used to create this equipment, allowing a maximum accuracy in finish, achi ving a strong machine with excellent appearance and with silent and precise functioning.

It includes four movements per plate with a one single remote control

It includes an additional set of plates for moving the second axis in order to check the two axes without moving the vehicle. The equipment is governed by a single hydraulic unit for the whole plate.

Operation	Electro Hydraulic
Max load per axle	4 Tn.
Motor	2,2 Kw
Hydraulic Pump	15 l. / minute

Standard Equipment

- 4 electro-hydraulic play detectors with 4 movements
- Hydraulic group
- Electric box
- Wired control torch

Technical Data

Maximum axle load	4 Tn.
Motor	2,2 Kw
Voltage	230 V. 50 Hz. Threephasic
Thermal Protector	10 A
Protection Fuse	3 A
LED Lamp	12 V / 6 W
Tank capacity hydraulic unit	15 L. SAE-10 oil
Hydraulic Pump	12 L / minute
Power force	12.500 N
Max. Side movement	100 mm.
Stroke speed	26 cm / s
Wired lamp operation and control	

Mechanics

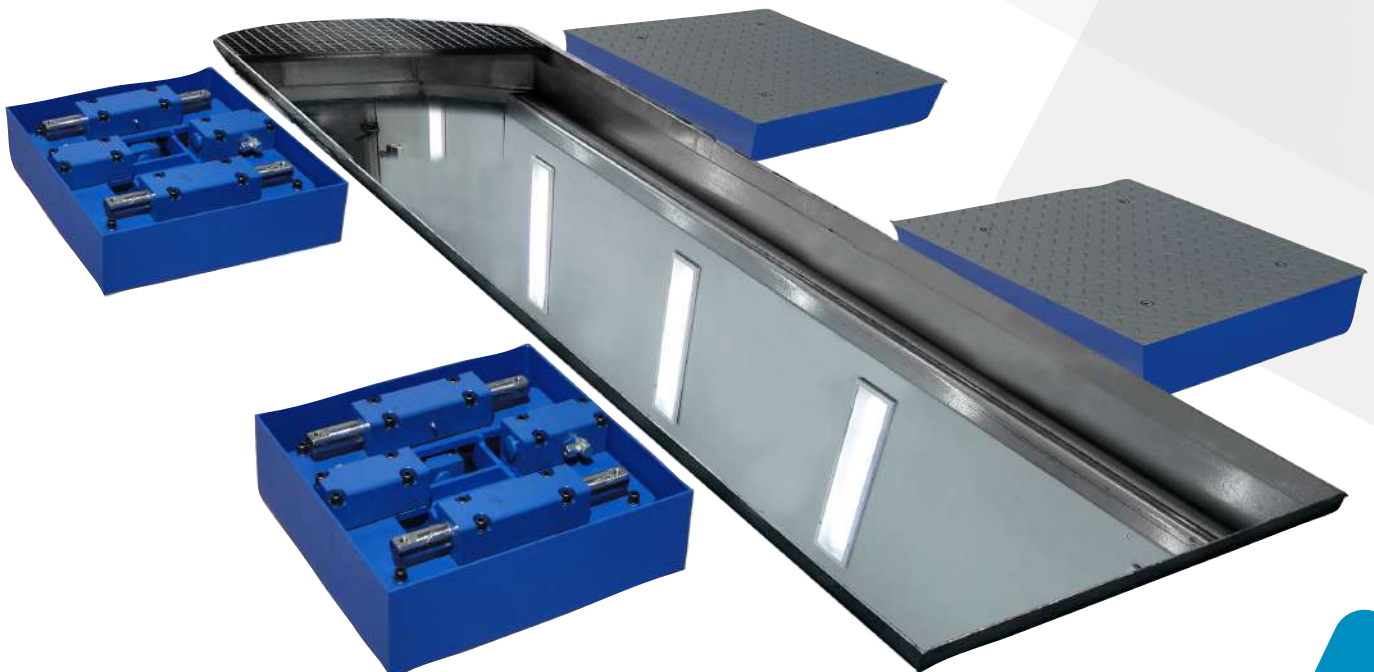


Epoxy Paint

Powder-coated finish ensures optimal and long-lasting protection

Perfect Fit Assembly

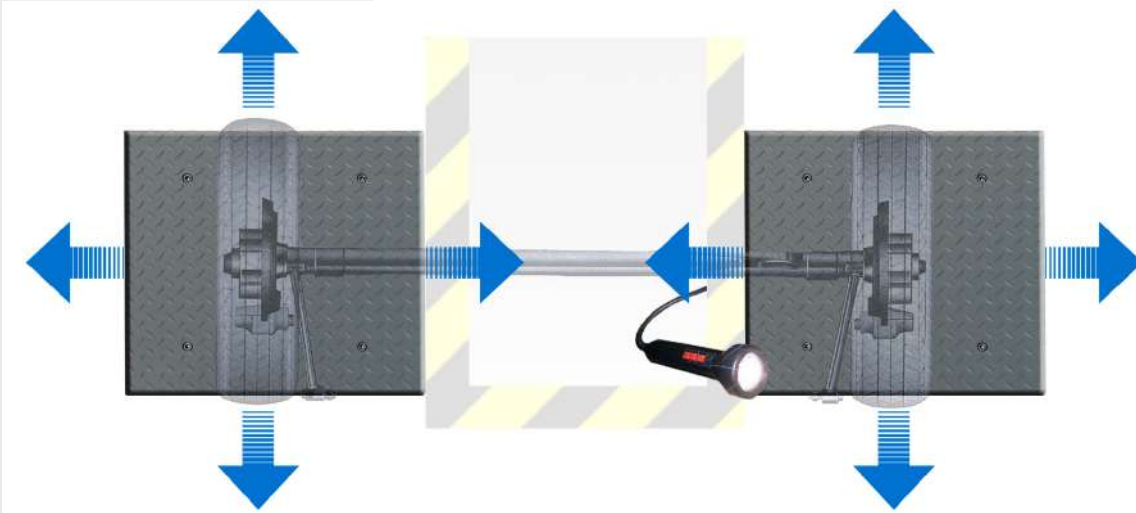
Mechanical design using Perfect-Fit, which guarantees the assembly and perfect final finish on all our equipment



Dimensions

Plate Dimensions	900 x 650 x 160 m m.
Packed equipment dimensions	(2) 1.280 x 980 x 980 mm.
Plate weight (unit)	160 Kg
Packed equipment weight	710 Kg

Longitudinal and transversal movement in all plates



Optional Equipment



DHL-PGH

Pupitre Hydraulic group
Dimensions: 420 x 550 x 1.460 mm.
Weight 92 Kg

DHL-230

Power supply 230 V. Threephasic

DH-LI

Wireless control LED flashlight with rechargeable lithium battery.



DHL-BOC

Civil work frame

GEN-40LRH

40 m. hydraulic hose assemblies and fittings

The ELECTRO-HYDRAULIC control unit is suitable for testing the condition of axles of vehicles and their components. The device allows you to detect possible wears and plays on the axles.

The two testing plates which are installed at floor level in parallel are controlled by switches on the hand torch for forward / backward on sideway movements.


The latest technologies have been used to create this equipment, allowing a maximum accuracy in finish, achieving a strong machine with excellent appearance and with silent and precise functioning.

Standard Equipment


- 1 electro-hydraulic play detector with 4 movements
- 1 electro-hydraulic play detector with 2 movements
- Hydraulic group
- Electric box
- Wired control torch

Technical Data


Maximum axle load	18 Tn.
Motor	2,2 Kw
Voltage	400 V. 50 Hz. Threephasic
Thermal Protector	10 A
Protection Fuse	3 A
LED Lamp	12 V / 6 W
Tank capacity hydraulic unit	15 L. SAE-10 oil
Hydraulic Pump	15 L. / minute
Power force	30.000 N
Max. Side movement	95 mm.
Stroke speed	12,75 cm / s
Wired lamp operation and control	

Operation	Electro Hydraulic
Max load per axle	18 Tn 
Motor	2,2 Kw
Hydraulic Pump	15 l. / minute

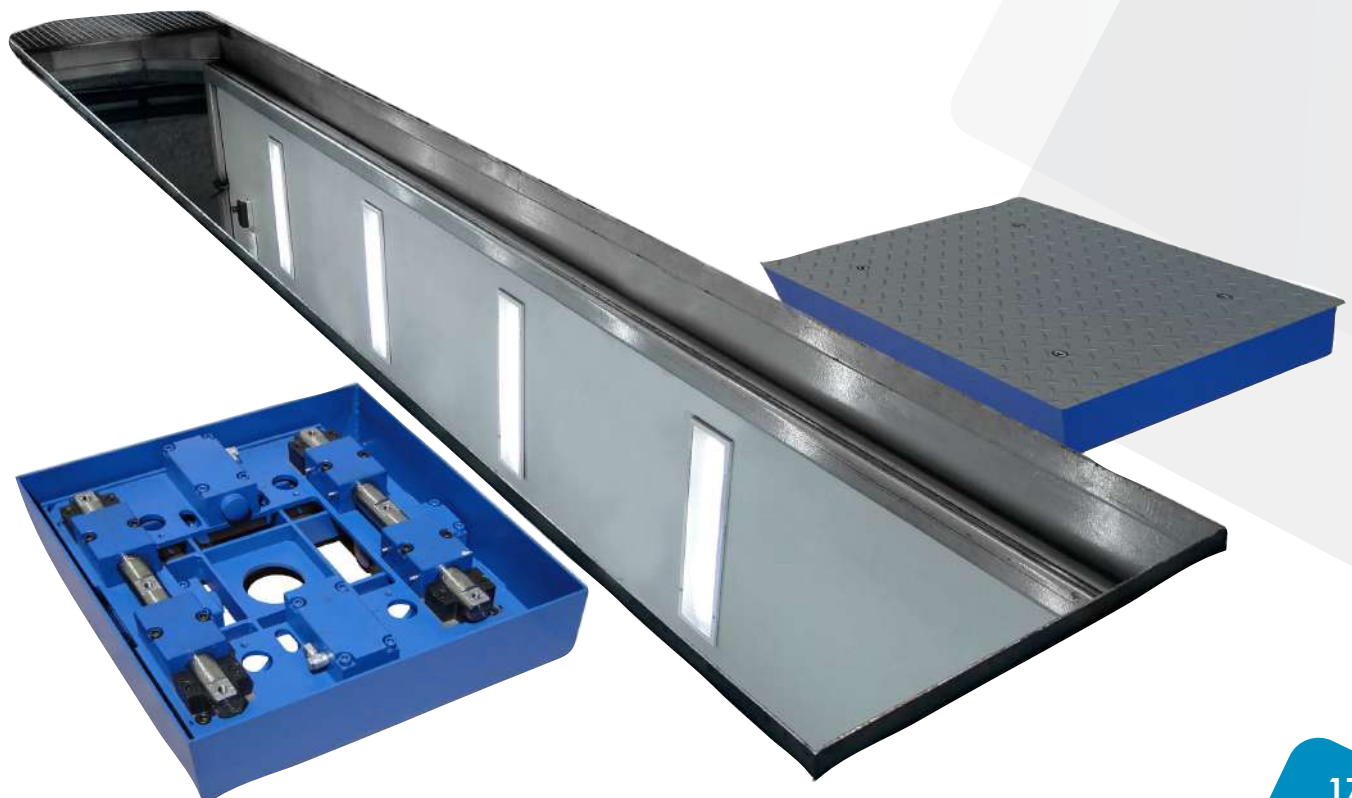
Mechanics



Epoxy Paint
Powder-coated finish ensures optimal and long-lasting protection



Perfect Fit Assembly
Mechanical design using Perfect-Fit, which guarantees the assembly and perfect final finish on all our equipment

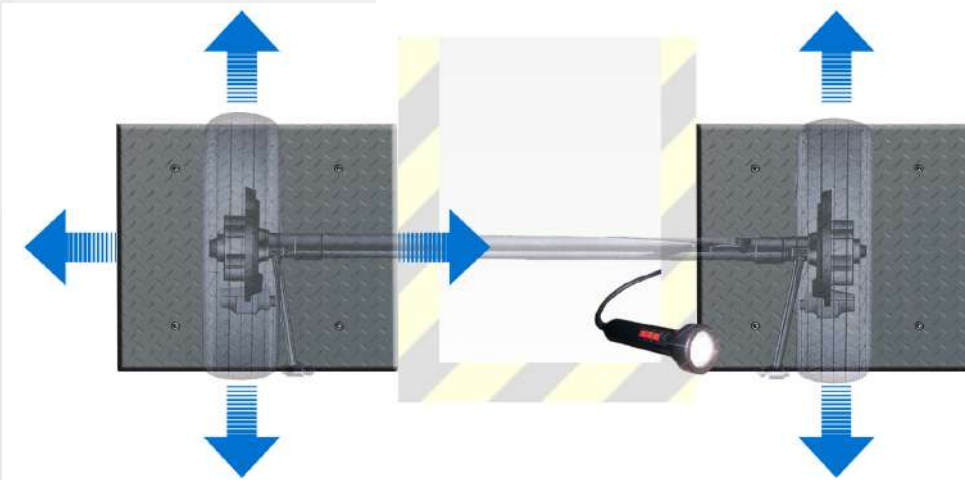


Debido a la continua evolución de nuestros productos, las características técnicas y de diseño podrían estar sujetas a modificaciones, sin previo aviso.

Dimensions

Plate Dimensions	820 x 820 x 196 mm.
Packed equipment dimensions	1.280 x 1.000 x 980 mm.
Plate weight (unit)	290 Kg
Packed equipment weight	660 Kg

Longitudinal and transverse movement of the left plate and longitudinal movement in the right plate



Optional Equipment



DHL-PGH

Pupitre Hydraulic group
Dimensions: 420 x 550 x 1.460 mm.
Weight 92 Kg

DHL-230

Power supply 230 V. Threephasic

DH-LI

Wireless control LED flashlight with rechargeable lithium battery.



DHL-BOC

Civil work frame

GEN-40LRH

40 m. hydraulic hose assemblies and fittings

Debido a la continua evolución de nuestros productos, las características técnicas y de diseño podrían estar sujetas a modificaciones, sin previo aviso.

The ELECTRO-HYDRAULIC control device is used to check the condition of the axles of vehicles and their components. It allows to observe the possible wear and tear caused by them.

Two test plates installed on the floor at ground level are guided in their transverse movements with the switches mounted on the hand lamp.

The latest technologies have been used to create this equipment, allowing a maximum accuracy in finish, achieving a strong machine with excellent appearance and with silent and precise functioning.

The TOTAL DHU includes four movements per plate, but with a single control that provides movement to each plate.

Operation	Electro Hydraulic
Max load per axle	18 Tn
Motor	2,2 Kw
Hydraulic Pump	15 l. / minute

Standard Equipment

- 2 Electro hydraulic play detectors with 4 movements
- Hydraulic group
- Electric box
- Wired control torch

Technical Data

Maximum axle load	18 Tn.
Motor	2,2 Kw
Voltage	400 V. 50 Hz. Threephasic
Thermal Protector	10 A
Protection Fuse	3 A
LED Lamp	12 V / 6 W
Tank capacity hydraulic unit	15 L. SAE-10 oil
Hydraulic Pump	15 L. / minute
Power force	30.000 N
Max. Side movement	95 mm.
Stroke speed	12,75 cm / s
Wired lamp operation and control	

Mechanics

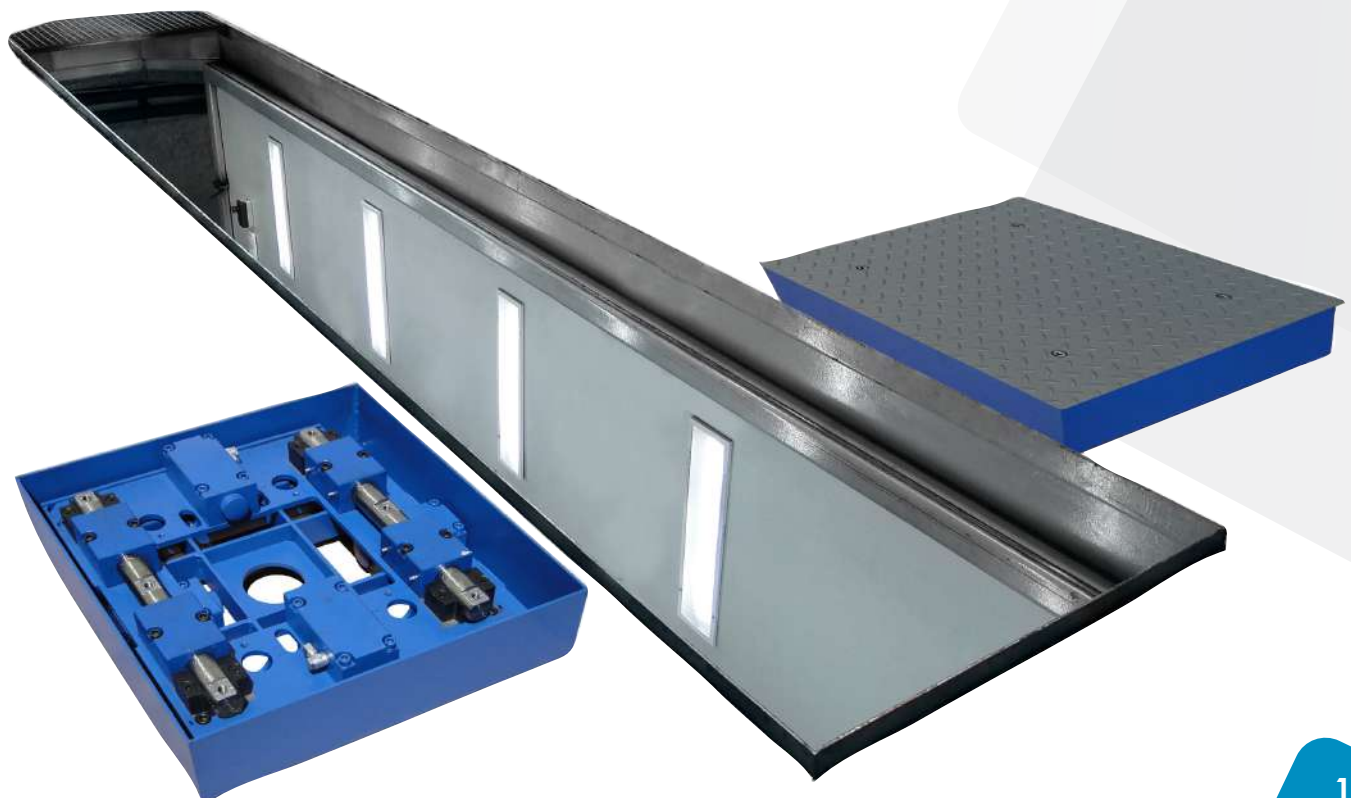


Epoxy Paint

Powder-coated finish ensures optimal and long-lasting protection

Perfect Fit Assembly

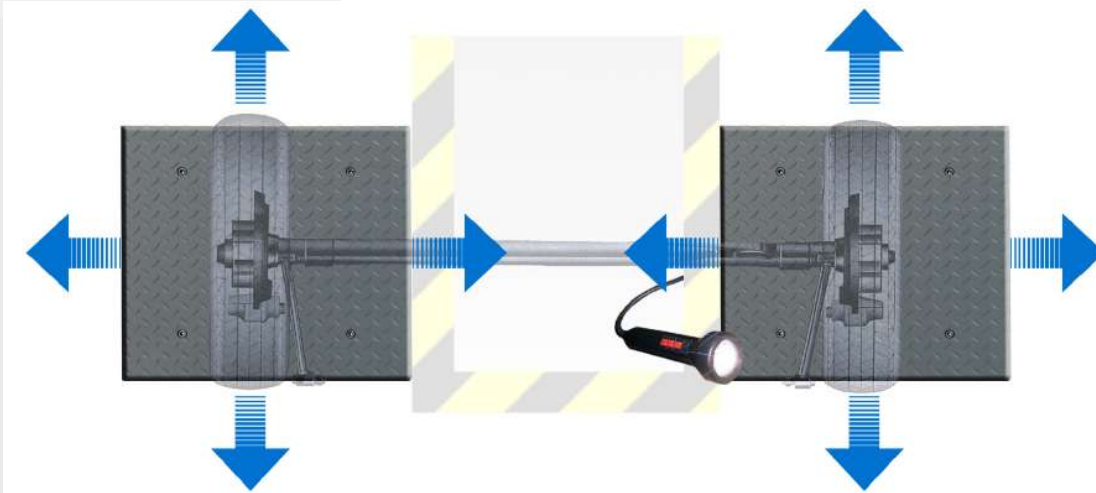
Mechanical design using Perfect-Fit, which guarantees the assembly and perfect final finish on all our equipment



Dimensions

Plate Dimensions	820 x 820 x 196 mm.
Packed equipment dimensions	1.280 x 1.000 x 980 mm.
Plate weight (unit)	290 kg
Packed equipment weight	640 kg

Longitudinal, transverse movement on both plates



Optional Equipment



DHL-PGH

Pupitre Hydraulic group
Dimensions: 420 x 550 x 1.460 mm.
Weight 92 Kg

DHL-230

Power supply 230 V. Threephasic

DH-LI

Wireless control LED flashlight with rechargeable lithium battery.



DHL-BOC

Civil work frame

GEN-40LRH

40 m. hydraulic hose assemblies and fittings

Debido a la continua evolución de nuestros productos, las características técnicas y de diseño podrían estar sujetas a modificaciones, sin previo aviso.

The ELECTRO-HYDRAULIC control device is used to check the condition of vehicle axles and their components. It allows to observe the possible wear and tear and the play caused by them

Four test plates installed on the floor at ground level are guided in their transverse movements with the switches mounted on the hand lamp.

The latest technologies have been used to create this equipment, allowing a maximum accuracy in finish, achieving a strong machine with excellent appearance and with silent and precise functioning.

Includes four movements per plate with a single remote control

Operation **Electro Hydraulic**

Max load per axle **18 Tn**

Motor **2,2 Kw**

Hydraulic Pump **15 l. / minute**

Standard Equipment

- 4 Electro hydraulic play detectors with 4 movements
- Hydraulic group
- Electric box
- Wired control torch

Technical Data

Maximum axle load	18 Tn.
Motores	2,2 Kw
Voltage	400 V. 50 Hz. Threephasic
Thermal Protector	10 A
Protection Fuse	3 A
LED Lamp	12 V / 6 W
Tank capacity hydraulic unit	15 l. SAE-10 oil
Hydraulic Pump	15 l / minute
Power force	30.000 N
Max. Side movement	95 mm.
Stroke speed	12,75 cm / s
Wired lamp operation and control	

Mechanics



Epoxy Paint

Powder-coated finish ensures optimal and long-lasting protection

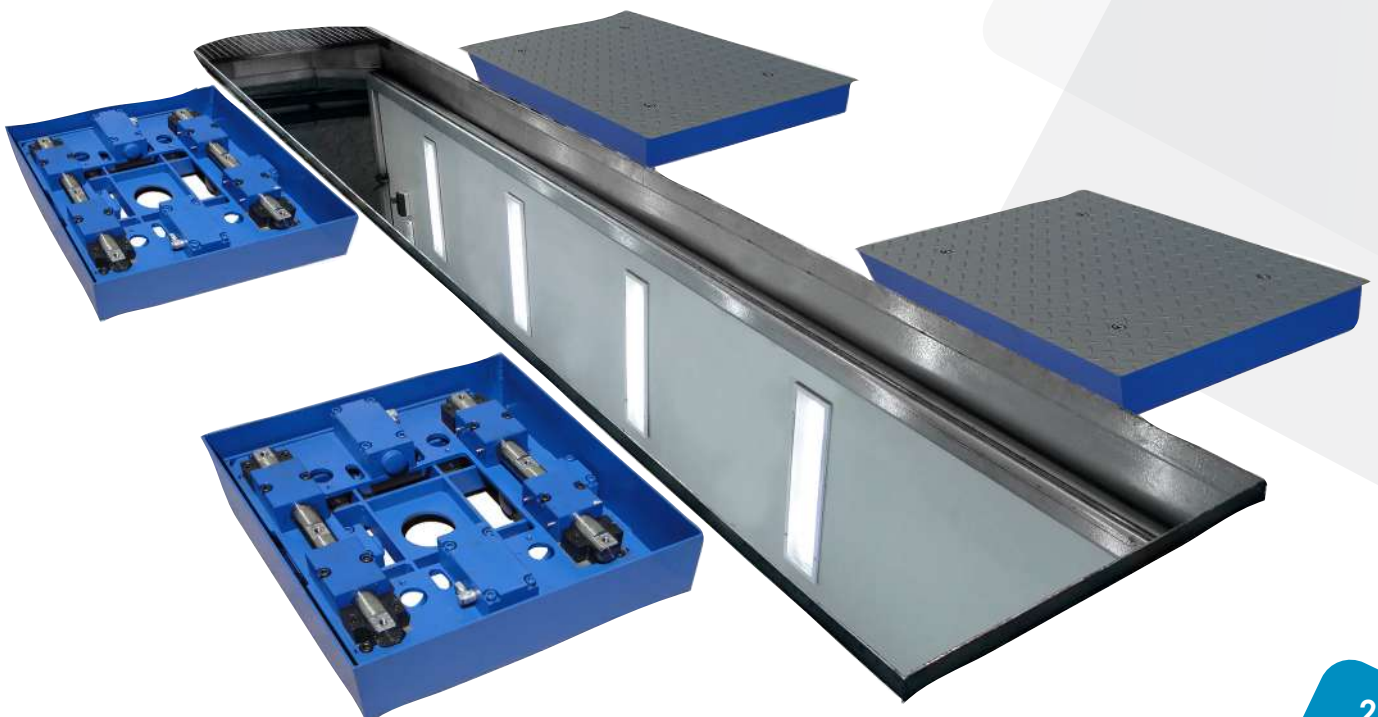


Perfect Fit Assembly

Mechanical design using Perfect-Fit, which guarantees the assembly and perfect final finish on all our equipment

It includes an additional set of plates for the movement of the second axle in order to check both axles without moving the vehicle. The equipment is governed by a single Hydraulic unit for the whole set of plates.

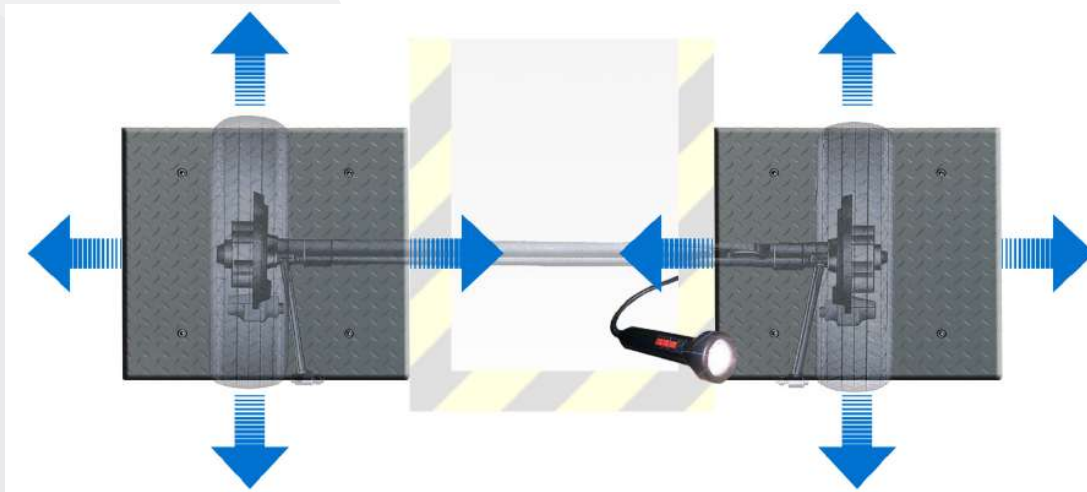
* As long as the wheelbase matches the distance between the plates



Dimensions

Plate Dimensions	820 x 820 x 196 mm.
Packed equipment dimensions	1.280 x 1.100 x 980 mm.
Plate weight (unit)	290 Kg
Packed equipment weight	1.260 Kg

Longitudinal, transverse movement on both plates



Optional Equipment



DHL-PGH

Pupitre Hydraulic group
Dimensions: 420 x 550 x 1.460 mm.
Weight 92 Kg

DHL-230

Power supply 230 V. Threephasic

DH-LI

Wireless control LED flashlight with rechargeable lithium battery.



DHL-BOC

Civil work frame

GEN-40LRH

80m. hydraulic hose assemblies and fittings

The ELECTRO-HYDRAULIC control device is suitable for checking the axles of agricultural vehicles and their components, of the possible wear and tear and the play caused by it.

The test plates installed on the floor at ground level, is guided in its movements by the switches mounted on the lamp handheld.

The latest technologies have been used to create the equipment, adding the maximum precision in its finish, achieving a Robust machine with excellent aesthetics, quiet operation and precise.

Supplied in two independent plates, extensible connecting beam and access ramps for easy assembly and disassembly.

Standard Equipment

- Hydraulic play detector with transversal and longitudinal movement
- Hydraulic group
- Electric box
- Coupling hoses
- Wired control torch

Technical Data

Maximum axle load	3 Tn.
Motor	5,5 CV.
Voltage	220 V. Monophase
Max. Side movement	100 mm.
Cylinder Thrust Force	7.000 N
Working pressure	70 bars

Operation **Electro Hydraulic**

Max load per axle **3 Tn.**

Motor **5,5 Cv.**

Mechanics



Epoxy Paint

Powder-coated finish ensures optimal and long-lasting protection

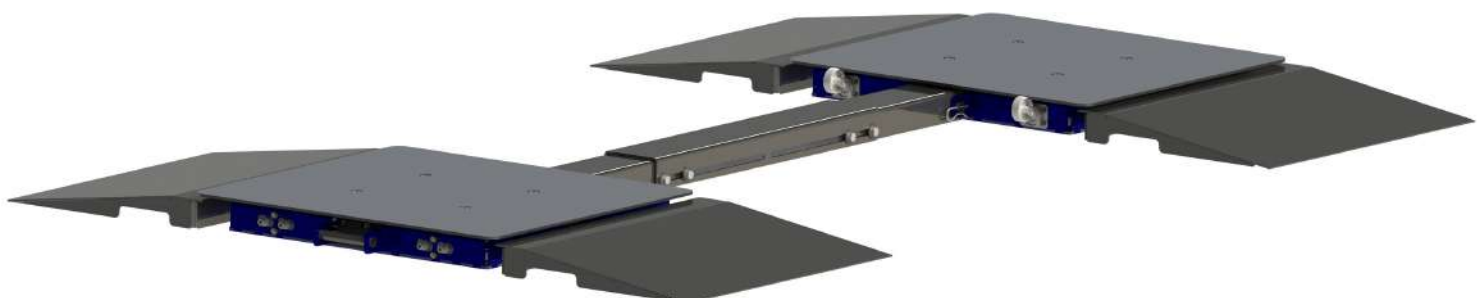


Perfect Fit Assembly

Mechanical design using Perfect-Fit, which guarantees the assembly and perfect final finish on all our equipment



Scan the QR code and view the video



de nuestros productos, las características técnicas y de diseño podrían estar sujetas a modificaciones, sin previo aviso.

Dimensions

Dimensions del Hydraulic group	500 x 660 x 1.000 mm.
Plate Dimensions	700 x 650 x 72 mm.
Packed equipment dimensions	850 x 750 x 350 mm.
Weight del Hydraulic group	100 Kg
Plate weight (unit)	69,5 Kg
Packed equipment weight	290 Kg



Optional Equipment



DHA-GH

Hydraulic jack for agricultural vehicles.
Lifting power: 5 Tn. Travel: 250 mm.
Operated by means of a torch wired.



DH-LI

Wireless control LED flashlight with rechargeable lithium battery.

GEN-80LRH

80 m. hydraulic hose assemblies and fittings

The RY-LIFT is an electro-hydraulic scissor lift specially designed for alignment, with a capacity of 5,000 kg. and a length of 5 meters. The alignment plates can be placed in three different positions to adapt to the wheelbase of the vehicles.

Four check plates installed on the lift and adapted to RD920/2017. The four check plates are guided in their transverse movements by switches mounted on the hand lamp. It includes four movements per plate with a single control knob.

Latest technologies have been used to create the equipment, thus adding maximum precision in its finishing, achieving a robust machine with excellent aesthetics, silent and precise operation. It includes a second pair of plates to watch both axes without moving the vehicle.

Rise/Down time	65/70 seconds
Max. load per axle	5 Tn.
Motor	2,6 Kw
Hydraulic pump	15 l. / minute

Equipamiento Estándar

- 4 electro-hydraulic play detectors with 4 movements
- Hydraulic group
- Electric box
- Scissor lift
- Wired control torch

Datos Técnicos DH

Max load per axle	4 Tn.
Motors	2,6 Kw
Voltage	230 V. 50 Hz. Threephasic
Thermal fuse	10 A
Protection fuse	3 A
LED lamp	12 V / 6 W
Hydraulic unit tank capacity	15 l. oil SAE-10
Hydraulic pump	12 l / minute
Max thrust force	12.500 N
Displacement per side	105 mm.
Travel speed	26 cm / s
Drive and control in lamp with cable	

Datos Técnicos elevador

Max load per axle	5 Tn.
Motors	2,6 Kw
Voltage	380 V / 2,6 kw
Lift max height	2,16 m.
Lift min height	0,29 m.
Auxiliary elevator height	0,45 m.
Platform length	5,00 m.
Overall width	2,20 m.
Length of access ramps	1,35 m.
Lifting time	65 s.
Weight	2.690 kg.

Mechanics



Epoxy Paint

Powder-coated finish ensures optimal and long-lasting protection



Perfect Fit Assembly

Mechanical design using Perfect-Fit, which guarantees the assembly and perfect final finish on all our equipment

